


Beacon Hill Institute



18th Annual
State
Competitiveness
Report

State Rankings 2018 by State

	Subindexes, Results in 2018 (18th Edition) by Alphabetical Order																	
	Overall		Govt & Fiscal Policy		Security		InfrStrc		Human Resources		Tech		Biz Incub.		Openness		Enviro Ply	
	Index	Rank	I	R	I	R	I	R	I	R	I	R	I	R	I	R	I	R
Alabama	4.183	40	5.74	9	3.941	44	5.38	21	3.65	46	4.97	25	4.976	29	4.765	29	4.57	38
Alaska	3.744	45	4.564	37	4.635	31	4.63	36	3.82	43	4.135	41	3.515	46	5.66	14	5.959	8
Arizona	5.063	24	7.047	2	4.138	39	5.06	27	4.39	36	4.686	30	4.645	34	4.893	28	5.294	19
Arkansas	4.216	39	5.67	11	4.302	34	5.61	17	3.67	45	3.915	48	5.112	24	4.113	40	5.676	13
California	5.317	20	3.826	44	4.3	35	4.24	41	4.61	31	5.45	10	6.606	4	6.38	5	5.37	17
Colorado	5.923	10	5.83	8	4.923	25	4.95	29	5.85	10	5.86	6	5.041	27	4.376	36	5.441	16
Connecticut	4.513	33	3.6	47	6.05	5	2.94	48	5.76	11	6.28	5	3.259	50	6.196	8	4.709	35
Delaware	4.028	42	3.987	42	4.649	30	4.21	42	5.00	27	4.664	31	6.26	7	5.712	12	3.13	48
Florida	5.231	22	6.234	5	4.044	41	5.97	10	4.54	33	4.275	39	5.597	12	5.885	10	4.025	41
Georgia	5.564	14	5.19	23	4.61	33	5.95	11	3.81	44	5.11	19	6.136	8	5.232	21	5.35	18
Hawaii	3.93	43	3.665	46	5.595	18	2.40	50	5.64	14	4.001	43	4.461	36	5.562	16	6.047	7
Idaho	6.282	5	4.66	35	5.776	10	6.07	5	5.25	21	4.419	38	6.465	5	3.682	46	6.831	2
Illinois	4.087	41	3.578	48	4.277	36	5.27	24	4.91	29	5.251	17	3.746	43	6.737	4	3.984	42
Indiana	4.955	27	6.739	3	4.063	40	5.73	15	4.94	28	5.034	22	5.372	15	5.624	15	2.389	50
Iowa	6.878	2	4.901	28	6.788	3	5.82	13	6.39	4	4.996	24	5.084	26	4.531	33	6.112	6
Kansas	5.622	13	4.921	27	5.759	11	5.79	14	5.35	19	4.57	33	5.19	21	4.457	35	5.497	15
Kentucky	4.815	31	5.504	15	5.316	22	6.00	8	4.28	38	3.968	44	4.647	33	5.708	13	4.123	40
Louisiana	3.136	49	5.481	16	3.472	48	5.11	26	3.43	49	3.933	46	5.561	13	5.336	19	3.087	49
Maine	4.938	28	4.449	40	5.898	7	4.58	38	5.42	17	4.442	36	4.851	31	4.63	30	5.57	14
Maryland	4.96	26	4.757	30	4.018	43	3.69	44	5.71	12	8.42	2	3.569	44	4.999	26	4.739	34
Massachusetts	7.75	1	4.746	31	5.52	19	3.17	46	7.28	1	8.535	1	6.68	3	6.257	6	4.577	37
Michigan	5.391	15	7.244	1	4.026	42	5.04	28	4.84	30	5.345	14	3.503	47	5.95	9	5.02	28
Minnesota	6.029	7	4.673	34	5.743	12	5.38	20	6.88	3	4.832	27	3.856	42	5.333	20	5.843	10
Mississippi	3.82	44	5.347	18	5.73	13	4.84	31	2.78	50	4.446	35	5.219	19	3.672	47	5.061	26
Missouri	4.49	35	5.511	14	3.432	49	5.22	25	5.15	25	5.188	18	5.1	25	4.073	41	5.066	25
Montana	5.103	23	4.542	38	5.496	20	6.13	4	5.10	26	4.754	29	4.984	28	2.781	50	6.475	5
Nebraska	6.144	6	5.179	24	5.825	8	6.04	7	5.87	9	4.461	34	4.762	32	4.121	39	6.55	4
Nevada	4.517	32	6.537	4	3.7	46	6.07	6	3.61	47	3.615	49	4.914	30	6.231	7	4.136	39
New Hampshire	5.381	16	5.525	13	4.673	29	3.34	45	7.17	2	5.327	15	5.125	23	4.904	27	4.879	31
New Jersey	2.846	50	1.874	50	5.71	15	2.81	49	5.40	18	4.89	26	3.537	45	6.82	2	3.654	45
New Mexico	3.74	46	5.549	12	2.94	50	4.81	34	3.56	48	5.30	16	5.181	22	3.77	43	5.788	12
New York	5.023	25	3.684	45	5.392	21	3.80	43	5.27	20	5.534	9	4.27	39	6.969	1	5.132	22
North Carolina	5.915	11	4.42	41	4.611	32	5.98	9	4.32	37	6.498	3	6.396	6	5.22	22	4.809	33
North Dakota	5.853	12	5.212	22	4.22	37	6.21	2	6.27	5	5.11	21	5.547	14	4.563	31	4.969	29
Ohio	4.51	34	5.316	20	5.312	23	5.67	16	4.56	32	4.806	28	4.459	37	5.041	23	3.62	46
Oklahoma	3.68	47	4.565	36	4.837	27	4.94	30	4.08	40	4.043	42	5.292	18	3.756	45	5.241	21
Oregon	5.347	17	5.222	21	5.625	16	5.37	22	4.50	34	5.11	20	3.929	41	4.215	38	6.877	1
Pennsylvania	4.344	36	4.538	39	4.148	38	4.74	35	5.20	23	6.46	4	4.352	38	5.034	24	3.904	43
Rhode Island	4.34	37	4.72	32	5.822	9	3.16	47	5.51	15	5.422	12	3.39	48	5.507	18	4.835	32
South Carolina	4.923	29	5.682	10	3.857	45	4.81	33	4.46	35	4.428	37	5.712	10	5.789	11	5.067	24
South Dakota	6.305	4	5.01	25	6.37	4	6.20	3	5.18	24	3.925	47	7.35	1	3.302	49	5.868	9
Tennessee	4.322	38	6.1	7	3.575	47	5.86	12	4.05	41	4.255	40	5.337	16	4.535	32	4.62	36
Texas	6.695	3	6.161	6	4.78	28	6.44	1	3.89	42	5.365	13	5.795	9	6.786	3	4.95	30
Utah	5.984	8	4.943	26	5.722	14	5.50	19	6.01	7	5.433	11	6.994	2	4.336	37	3.482	47
Vermont	5.27	21	3.842	43	7.222	2	4.31	40	6.16	6	4.629	32	4.147	40	4.53	34	5.826	11
Virginia	5.947	9	5.34	19	5.61	17	4.83	32	5.96	8	5.02	23	5.31	17	5.02	25	5.24	20
Washington	5.319	19	4.768	29	4.875	26	4.52	39	5.23	22	5.819	7	3.35	49	5.532	17	6.691	3
West Virginia	3.43	48	5.446	17	5.949	6	4.60	37	4.13	39	3.958	45	4.507	35	3.759	44	3.779	44
Wisconsin	5.324	18	4.719	33	5.205	24	5.28	23	5.64	13	5.558	8	5.211	20	4.068	42	5.114	23
Wyoming	4.88	30	3.24	49	7.504	1	5.52	18	5.51	16	3.555	50	5.701	11	3.642	48	5.031	27

From the Project Manager



BHI

The Beacon Hill Institute is pleased to release its 18th Annual State Competitiveness Report. This edition comes during the trying times of pandemic outbreak, lockdowns and uncertainty. As the nation contends with both a COVID-19 outbreak and social unrest, it's important to remember one of the important features of the index: long-term economic growth matters. The ongoing crisis requires that state policymakers cannot underestimate the importance of economic growth in alleviating and solving current problems including how best to restart business activity, spur human ingenuity and rethink regulatory regimes.

Published since 2001, the report is centered on a comprehensive index that has increasingly drawn the attention of policymakers, economists, and public officials who are seeking to identify the strengths and weaknesses in their state's ability to promote economic growth.

The BHI Index is different from most state business climate indices. It goes beyond tax policy and regulatory analyses to establish more comprehensive ranking categories. The BHI Index identifies how well a state performs in its ability to cultivate, for example, a solid base of scientists and engineers, a groundswell of patents, or a positive savings rate while keeping business costs to a minimum.

We expect that this year's edition will draw particular interest. Moreover, we look forward to capture the effects of the 2020 downturn in future iterations of our study. Such an exogenous shock is sure to displace some states that have perennially performed well since the index's inception. That makes the key to understanding the pillars of success all the more important.

There is a strong reason to believe that resilience will focus on the importance of human capital, suggesting that the overall health and educational attainment of its workers is as important as fiscal rectitude or natural endowments. Thus, states that are rich in natural resources have no guaranteed advantage over states that are rich in human capital. On the other hand, states that are rich in educational resources are not necessarily more competitive than states that are rich in fossil fuels.

This edition of the Competitiveness Report is the product of months of collaboration between Institute staff and the enthusiastic summer 2020 interns, who assisted in various aspects of data collection, production, and promotion. While learning the art of number-crunching, fact-checking, and Microsoft Excel programming along the way, these students improved their research and media skills. It's always an immense pleasure to work with tomorrow's economists on real-world analysis.

This year's contribution has been made possible by the leadership of Vanessa Robinson of Bay State College. Vanessa managed other interns in data collection and analysis. Responsible for the production of what you now hold in your hands, Caroline Pitman of Catholic University adeptly updated the Index's design and re-introduced the 50 state pages into this year's report. Benny Magid of Columbia University lent his prolific computer programming skills to create online data visualization of all of the data in the index where users can compare state performance across several variables.

We believe that the variety of experience each team member brings to the project is an example of human capital put to its best use. The soft skills of our team make the hard data easier to understand and in our current age show a path forward. We can't say it enough: for competitiveness, the deepening of human capital is essential for highly-motivated entities; whether they are states, metropolitan areas, or research organizations – like our own Beacon Hill Institute.

Frank Conte

Table of Contents

Alabama	16
Alaska	17
Arizona.....	18
Arkansas.....	19
California.....	20
Colorado	21
Connecticut.....	22
Delaware	23
Florida	24
Georgia.....	25
Hawaii	26
Idaho.....	27
Illinois.....	28
Indiana	29
Iowa	30
Kansas	31
Kentucky.....	32
Louisiana.....	33
Maine.....	34
Maryland.....	35
Massachusetts.....	36
Michigan	37
Minnesota	38
Mississippi	39
Missouri	40
Montana.....	41
Nebraska	42
Nevada	43
New Hampshire	44
New Jersey	45
New Mexico.....	46
New York	47
North Carolina.....	48
North Dakota	49
Ohio.....	50
Oklahoma	51
Oregon	52
Pennsylvania.....	53
Rhode Island.....	54
South Carolina	55
South Dakota.....	56
Tennessee.....	57
Texas	58
Utah	59
Vermont	60
Virginia	61
Washington.....	62
West Virginia.....	63
Wisconsin	64
Wyoming	65



“We consider a state to be competitive if it has in place the policies and conditions that ensure and sustain a high level of per capita income and its continued growth.”



The consequences involved with these questions are simply staggering. Once one starts to think about them, it is hard to think about anything else. (Lucas, 1988).

To this day regional economists have tackled the issue with all the sound and fury attached to policy debates. For nearly two decades, the State Competitiveness Index has tried to highlight the underpinnings of economic success. The impulse to generate performance rankings never cease and the academic debate about the determinants of state economic growth moves forward. Of equal importance to the academic debates are the inquiries from practitioners who place their state performance in not only BHI's Index for but other indices.

This State Competitiveness Report uses the questions above as a starting point. The indices are designed to measure the long-term competitiveness of an area, and use a similar approach to the one taken in BHI's earlier studies of state competitiveness.

In this most recent report, Massachusetts once again retained the leading position. The state of Iowa finished second, followed by Texas, South Dakota, Idaho, Nebraska, Minnesota, Utah, Virginia, and Colorado.

What is competitiveness?

We consider a state to be competitive if it has in place the policies and conditions that ensure and sustain a high level of per capita income and its continued growth. To achieve this, a state should be able to both attract and incubate new businesses, while providing provide an environment that is conducive to the growth of existing firms. Rather than implying head-to-head rivalry, competitiveness may be thought of as a catch-all term that covers what Michael Porter (2005) calls "the microeconomic foundations of prosperity."

Although individual states of the United States all face the same macroeconomic conditions set at the top – national fiscal, monetary, and trade policy. Where they differ from one another is in their microeconomic policies such as tax and regulatory regimes, their provision and emphasis on education, and their attractiveness to business. These policies matter. As Porter puts it, "Wealth is ... created at the microeconomic level ... in the ability of firms to create valuable goods and services using productive methods."

It follows that the outcome of competitiveness is greater affluence, measured by higher levels of per capita real Gross State Product (GSP) or personal income.

Quantifying competitiveness

To be useful as a concept, it is essential to have an operational measure of competitiveness, a measure that aggregates the key microeconomic variables into a single index. In its influential annual Global Competitiveness Report, the World Economic Forum does this for the countries of the world, but until BHI's index there has not been an equivalent at the state level. There are some more specialized rankings of the states, but none meets the criteria for measuring competitiveness as defined above, or has an equivalent breadth of coverage. We believe the Institute's index meets the challenge of providing a useful guide.

Using his celebrated "Diamond," Porter (1990) finds it helpful to group the factors determining competitiveness into four components: the quality of available inputs, the sophistication of local demand, the nature of local suppliers and the extent to which they form clusters, and the rules and institutions that govern the market.²

These are still very broad categories (Huggins et al, 2013) and so, following the Porter-

inspired Global Competitiveness Report, we classify our indicators into eight groups. The breakdown is as follows:

Government and Fiscal Policy: Businesses are more likely to be attracted to areas with moderate tax rates and clear evidence of financial discipline (as evidenced, for instance, by high state and municipal bond ratings, and budgetary balance). This sub-index is designed to pick up these effects.

Security: A state will be more attractive to a business if public officials are trusted and crime is low. The security sub-index addresses these dimensions of competitiveness, with particular emphasis on the importance of public safety.

Infrastructure: How easy is commuting? Are roads in an acceptable condition? Do most households have access to high-speed broadband and telephone services? Is housing affordable? How expensive is energy? These are the elements of competitiveness that are included in the infrastructure sub-index for each state.

Human Resources: A high level of labor force participation, and skilled labor that is readily available and not too expensive, combined with a widespread commitment to education, training, and health care, make a state attractive for business. These factors are captured in the human resources sub-index.

Technology: Since the arrival of the industrial revolution, the development and application of technology have been central to economic development. The technology sub-index measures this by taking into account research funding, the number of patents awarded the proportion of scientists and engineers in the labor force, and the importance of high tech companies.

Business Incubation: A good idea is not

enough. The business also needs to be able to mobilize financing for investment, both internally and from the financial system. A higher rate of business births is a particularly clear sign of a competitive environment, and is an important component of the business incubation sub-index. Over the past few years, we have added two other variables: an index that tracks the potential costs of tort liability and a measure of the education-adjusted cost of labor.

Openness: Open economies tend to be more competitive and hence more productive, in addition to specializing more thoroughly in their areas of comparative advantage. The openness sub-index measures how connected the firms and people in a state are with the rest of the world. It is based on the level of exports and the percent of the population born abroad.

Environmental Policy: States that are faced with environmental problems or that have a heavy-handed policy of environmental regulation are likely to be less attractive to businesses, workers, and managers. We measured this effect with the environmental policy sub-index, which among other things reflects the levels of air pollution and toxic releases. Decent air quality is a measure that states are pursuing to improve the environment and attract workers and investors.

The eight categories are coherent, but there is inevitably some degree of overlap in the way that each data series is assigned to the sub-indices. For instance, the amount of air travel could be included in the infrastructure sub-index or the measure of openness and electricity prices could be included in the infrastructure sub-index or the environmental sub-index. In practice, the assignment of a data series is much less important than the fact that it is included at all. See Table 2 for a detailed breakdown.

A competitiveness index is simply a summary

measure based on a large number of variables. One difficult and controversial part is choosing a weighting scheme. Our approach is the simplest and most transparent: within each sub-index, each variable carries equal weight. Then each sub-index is given the same weight when constructing the overall index. This has been referred to as a “democratic” weighting structure and is a reasonable artifact. At first sight, one might expect some series to move together, such as the level of taxation and the number of state employees. In practice, neither these series nor the others that make up the building blocks of our index, are closely correlated, suggesting that they are indeed picking up different facets of competitiveness.

Is the competitiveness index useful?

Do the indices of state competitiveness explain affluence and growth? If the index is properly constructed, then it should help explain why some areas are affluent while others are not. In our experiment we estimate an equation with the following general form:

$$\text{Adjusted Personal Income per capita} = a + b \times \text{Competitiveness Index}$$

We use a measure of personal income per capita for 2018, the year that corresponds best to the timing of most of the component series that make up our most recent competitiveness index, since the cost of living varies from state to state, we adjust the raw numbers to take into account the differences using regional price parities generated by the Bureau of Economic Analysis (See Aten et. al 2015). This gives us the following estimated equation:

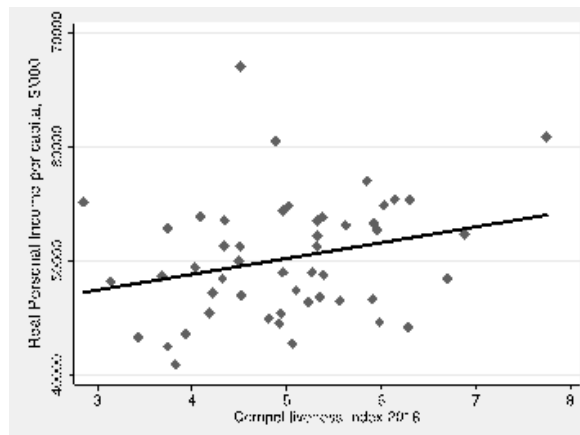
$$\text{Real personal income per capita in 2018} = 43,293 + 1,382 * \text{Index}$$

$$t=11.65 \quad t=1.89$$

$$p=0.000 \quad p=0.064$$

$$R^2 = 0.069$$

A one-point rise in the index is associated with a \$1,382 per capita increase in real personal income. Note that personal income is adjusted for price differences across states. The coefficients are statistically significant (even using robust estimation, as done here). The mean value of real personal income per capita by this measure was \$50,200 in 2018. Therefore, an increase in the competitiveness index of one point is associated with a 2.75 percent increase in real per capita income. Here is the graph.



Defining State Competitiveness

Putting the competitiveness index to work While it is interesting to look at the raw score, it's important to note, this may not be the most important use of the information from the exercise. The detailed data, both in individual variables and the sub-indices, allow one to identify the determinants of competitiveness. This is of value to policymakers, who are then in a better position to identify what needs to be done, in order of priority, to improve the position of their states.

To elaborate, a higher competitiveness indicator index is associated with greater affluence. A reasonable inference is that if one were to improve competitiveness, then residents of the state would be better off. And the greatest upside potential is for the indicators whose performance is currently weak. For instance, a low-crime state may have trouble reducing the crime rate further, while for a high-crime state, efforts to reduce crime are likely to be an efficient way to boost competitiveness.

Raise every sub-index that is below 5 up to five (e.g. security index goes from 4.02 to 5 etc.). The overall index would rise from 4.99 to 5.52, and Maryland's ranking would jump from 24th to 14th.

This represents an increase in the index of 0.53, which would be associated with \$732 more personal income per capita (i.e. a rise of 1.34% relative to its current real income per capita of \$54,360).

Improving Maryland's Standing to 5.05 means going from 24 th to 14th Place

Fiscal Policy	4.76	5
Security	4.02	5
Infrastructure	3.69	5
Human resources	5.71	5.71
Technology	8.42	8.42
Business	3.57	5
Openness	5	5
Environment	4.74	5

What next?

Since 2001, when we began compiling these rankings, we have set out to invite the policymakers, citizens, and the media to scrutinize the detailed results contained here. We have also visited statehouses from across the country, and hosted discussions

with delegations from the Republic of Georgia, China, and other nations. As well as having specialty publications such as Site Selection magazine turn to us regularly for our results. In fact, BHI has received significant press attention and fielded very many questions about our methodology. In fact, the State of Washington's Department of Commerce gave the BHI index "A" grades for its transparency, methodology, and variability.

Which resulted in Legislatures and planning agencies to have sought ways to improve their rankings. Some of their proposals such as adjusting the cost of labor for educational attainment have long been incorporated. Thus, proving that institutions continue to matter in measuring economic growth.

Maryland 2018 : 4.96. Rank: 26/50.

Fiscal Policy	4.76	30
Security	4.02	43
Infrastructure	3.69	44
Human resources	5.71	12
Technology	8.42	2
Business	3.57	44
Openness	5	26
Environment	4.74	34

Additionally, some institutions have compared our rankings to those of other studies that stress economic freedom or low tax criteria. While BHI does agree that economic freedom and sound tax policy are important, such as the share of state tax collections in Gross State Product, we believe that other factors are equally important to competitiveness. These include such variables as the time that is required to travel to work, the availability of venture capital, the number of patents generated, and the importance of high-tech firms. For each state, we set out the main competitive strengths and weaknesses to give individuals a sense of where their home state has been and which direction it could be taking. Although our index does not claim to determine growth, our regression results provide a clear guidance on how states may achieve and maintain affluence. Therefore, it remains a useful guide for policymakers seeking to improve the policy environment.

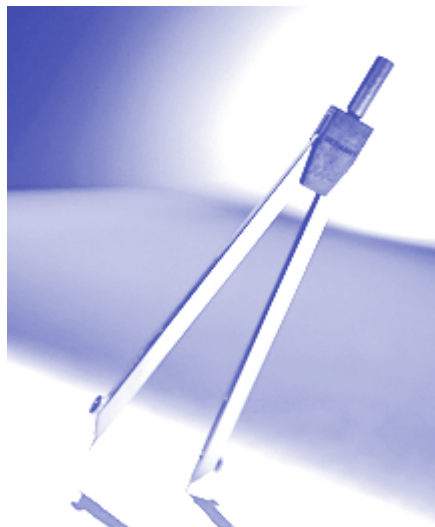
Yet to be measured is the exogenous shock of the COVID-19 crisis. For instance, the crisis diminished the capacity of some states to respond more effectively than others. Which might cause those who responded early, and delayed reopening to see a slower recovery. Also worth noting are the profound shifts, such as the greater pressure to rethink global supply chains. The recent impulses toward protectionism at the national level may also impinge on a region's openness. Another example, will the decline in airline passenger traffic bear harder on some states than others? Or will structural shifts away from urban centers precipitated by work-at-home measures make states more productive?

(For a discussion on the centrality of cities to competitiveness see Kresl, 2013) Lastly, will COVID-19 change the level of foreign direct investment and immigration both of which are critical to growth? It is safe to say that, new questions will arise out of our current context, and the BHI index will remain a solid benchmark to answer them.

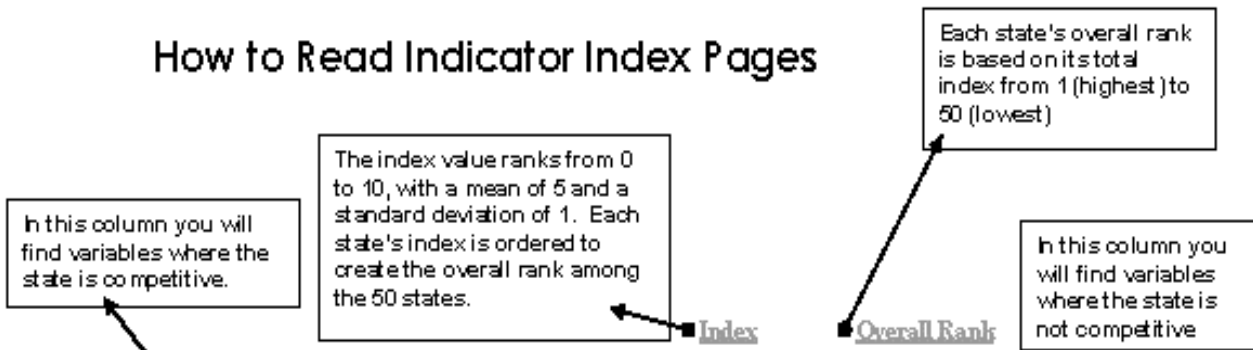
Table A1 Components of Sub-Indexes for the States: 2018	
Sub-index	Competitiveness Indicators Index ("objective")
Government & Fiscal Policy	State and local taxes per capita /income per capita(-) Workers' compensation premium rates (-) Bond rating (composite of S&P's and Moody's, scale 1-25) (+) Budget surplus/deficit as % of Gross State Product (+) Average weekly payment to insured unemployed (-) Full-time-equivalent state and local government employees per 100 residents (-)
Security	Crime index per 100,000 inhabitants (-) % Change in crime index, YoY(-) Murders index per 100,000 inhabitants (-) The BGA Integrity Index (+)
Infrastructure	Quality of Roads (According to Transportation.Gov) Air passengers per capita (+) Average travel time to work (-) Electricity Prices per kWh (-) Average rent of 2 bedroom apartment (-)
Human Resources	% of population without health insurance (-) % of population aged 25 and over that graduated from high school (+) Unemployment rate, not seasonally adjusted (-) % of students enrolled in degree-granting institutions per 1000 (+) % of adults in the labor force (+) Infant mortality rate in deaths per 1,000 live births (-) Total active physicians per 100,000 inhabitants (+) % of students at or above proficient in mathematics, Grade 4 public schools (+)
Technology	Academic Science and Engineering R&D per \$1,000 GSP (+) NIH support to institutions in the state, per capita (+) Patents per 100,000 inhabitants (+) Number of S&E graduate students per 100,000 residents (+) S&E degrees awarded per 100,000 residents (+) Individuals in science and engineering occupations as % of the labor force (+) Employment in high-tech industry as a % of total employment(+)
Business Incubation	Deposits in commercial banks and savings institutions, per capita (+) Venture capital investment dollars per worker (+) Employer firm births per 100,000 inhabitants (+) IPO volume, in \$ per capita (+) % of labor force that is represented by unions (-) Minimum wage (-) Pacific Research Institute's Tort Liability Index (-) Cost of labor adjusted for educational attainment (-)
Openness	Exports per capita, \$ (+) Employment in majority-owned U.S. Affiliates in State/Total employment in State, (+) (proxy for Foreign Direct Investment) % of population born abroad (+)
Environmental Policy	Toxic release inventory, on-site and off-site, total (new and original industries), pounds/sq. miles (-) Greenhouse Gas Emissions (million metric tons of carbon equivalent (MTCE) per 1000 Sq. Miles) (-) Air quality (% good average days) (+)



“Although individual states of the United States all face the same macroeconomic conditions set at the top – national fiscal, monetary, and trade policy. Where they differ from one another is in their microeconomic policies such as tax and regulatory regimes, their provision and emphasis on education, and their attractiveness to business. These policies matter.”



How to Read Indicator Index Pages



COMPETITIVE ADVANTAGES			COMPETITIVE DISADVANTAGES		
Subindex/Variable	Index	Rank	Subindex/Variable	Index	Rank
<i>Government and fiscal policy subindex</i>	4.97	24	<i>Government and fiscal policy subindex</i>	4.97	24
Budget deficit, % of GSP	5.10	11	Bond rating, composite	3.13	49
<i>Security subindex</i>	5.85	11	<i>Security subindex</i>	5.85	11
Tire BGA Integrity Index	5.69	15			
<i>Infrastructure subindex</i>	3.83	47	<i>Infrastructure subindex</i>		
...	6.99	1	Electricity prices per mWh BT		
...	8.88	1	Median Monthly Housing Costs		
...	8.45	1	Travel time to work		
...	7.11	2	<i>Human resources subindex</i>		
...	6.41	3	...		
...	7.85	1	<i>Technology subindex</i>		
...	5.38	5	<i>Business incubation subindex</i>	7.85	1
...	10.00	1	Minimum wage	3.42	43
<i>Openness subindex</i>	8.29	7	<i>Openness subindex</i>	8.29	7
Exports per capita, dollars	5.95	7			
% of population born abroad	5.98	9			
<i>Environmental policy subindex</i>	3.92	43	<i>Environmental policy subindex</i>	3.92	43
			Carbon emissions per 1000 sq miles	2.80	48

A subindex combines one or more variables that explain certain social or economic characteristics. For example, the institutions and security subindex is composed of other variables such as crime, percentage change in crime, and murders committed in the state.

Variables are the elements that make up each subindex. Variables that rank between 1 and 20 are considered advantages to a state, while variables that rank between 30 and 50 are considered disadvantages.

How to read the index pages

State Index



ALABAMA

Index Overall Rank
4.18 40

BHI

State Index

2018			2018		
COMPETITIVE ADVANTAGES			COMPETITIVE DISADVANTAGES		
Subindex/Variable	Index	Rank	Subindex/Variable	Index	Rank
Government and fiscal policy subindex	5.30	9	Government and fiscal policy subindex	5.30	9
State and local taxes per capita /income per capita	5.41	14	Full-time-equivalent state and local government	4.49	37
Bond rating: composite	5.27	19			
Average weekly payment to insured unemployed	6.55	3			
Security subindex	4.38	44	Security subindex	4.38	44
The BGA Integrity Index	5.59	10	Crime index, per 100,000 inhabitants	4.03	44
			Crime index change 2012-2013, %	4.24	47
			Murder index, per 100,000 inhabitants	3.64	46
Infrastructure subindex	5.16	21	Infrastructure subindex	5.16	21
Quality of Roads	5.72	12	Air passengers per capita	4.23	46
Average rent of 2 bedroom apartment	5.99	6			
Human resources subindex	4.13	46	Human resources subindex	4.13	46
			% of population without health insurance	4.41	37
			% of population aged 25 and over that graduated from high school	3.78	45
			% of adults who are in the labor force	3.46	47
			Infant mortality rate, deaths per 1000 live births	3.75	45
			Rate of active physicians per 100,000 inhabitants	4.02	44
			% of students at or above proficient in mathematics, grade 4 - public schools	3.69	45
Technology subindex	4.97	25	Technology subindex	4.97	25
Academic Science and Engineering R&D per \$1,000 GSP	5.61	10	Patents per 100,000 inhabitants	4.37	36
NIH support to institutions per capita	4.95	20	Scientists and engineers as % of labor force	4.47	33
Business incubation subindex	4.99	29	Business incubation subindex	4.99	29
Minimum wage	5.92	1	Total deposits (Commercial banks and Savings institutions) per capita	4.71	40
Cost of Labor Adjusted for Educ. Attainment	5.92	10	Venture capital per capita	4.57	46
			Employer firm births per 100,000 inhabitants	3.93	43
Openness subindex	4.83	29	Openness subindex	4.83	29
Incoming foreign direct investment per capita, dollars	5.34	20	% of population born abroad	4.06	45
Environmental policy subindex	4.69	38	Environmental policy subindex	4.69	38
Air Quality Index	5.44	13	Toxic release inventory, pounds per sq. miles	4.19	43
			Carbon emission per 1000 sq. miles	4.45	38

ALASKA

Index **Overall Rank**
3.74 **45**

BHI

State Index

2018			2018		
COMPETITIVE ADVANTAGES			COMPETITIVE DISADVANTAGES		
Subindex/Variable	Index	Rank	Subindex/Variable	Index	Rank
Government and fiscal policy subindex	4.82	37	Government and fiscal policy subindex	4.82	37
State and local taxes per capita /income per capita	6.85	2	Workers' compensation premium rates	3.43	47
Bond rating: composite	5.27	19	Full-time-equivalent state and local government employees per 100 residents	1.18	50
Budget deficit, % of GSP	6.17	4			
Average weekly payment to insured unemployed	6.04	10			
Security subindex	4.78	31	Security subindex	4.78	31
Crime index change 2012-2013, %	5.75	7	Crime index, per 100,000 inhabitants	1.71	50
The BGA Integrity Index	7.46	2	Murder index, per 100,000 inhabitants	4.22	39
Infrastructure subindex	4.84	36	Infrastructure subindex	4.84	36
Air passengers per capita	6.77	3	Quality of Roads	4.76	33
Average travel time to work	6.45	6	High-speed lines per 1000	4.23	48
			Electricity Prices per kWh	2.99	49
			Average rent of 2 bedroom apartment	3.83	42
Human resources subindex	4.23	43	Human resources subindex	4.23	43
% of population aged 25 and over that graduated from high school	6.34	4	% of population without health insurance	3.55	46
Infant mortality rate, deaths per 1000 live births	5.28	18	Unemployment rate, not seasonally adjusted	1.57	50
			% of population enrolled in degree-granting institutions	3.21	50
			% of students at or above proficient in mathematics, grade 4 - public schools	3.84	43
Technology subindex	4.39	41	Technology subindex	4.39	41
			NIH support to institutions per capita	4.24	45
			Patents per 100,000 inhabitants	4.35	41
			Science & Engineering grad. students 100,000 inhabitants	4.44	35
			S&E degrees awarded per 100,000 inhabitants	4.04	44
Business incubation subindex	4.44	46	Business incubation subindex	4.44	46
Pacific Research Institute Tort Index	7.04	1	Total deposits (Commercial banks and Savings institutions) per capita	4.66	48
			Venture capital per capita	4.56	47
			Employer firm births per 100,000 inhabitants	3.77	45
			% of labor force that is represented by unions	3.28	47
			Minimum wage	4.03	37
			Cost of Labor Adjusted for Educ. Attainment	3.79	45
Openness subindex	5.46	14	Openness subindex	5.46	14
Exports per capita, dollars	5.91	11			
Incoming foreign direct investment per capita, dollars	5.71	16			
Environmental policy subindex	5.68	8	Environmental policy subindex	5.68	8
Carbon emission per 1000 sq. miles	6.13	2	Toxic release inventory, pounds per sq. miles	4.55	39
Air Quality Index	6.36	7			

2018

COMPETITIVE ADVANTAGES			COMPETITIVE DISADVANTAGES		
<i>Subindex/Variable</i>	<i>Index</i>	<i>Rank</i>	<i>Subindex/Variable</i>	<i>Index</i>	<i>Rank</i>
Government and fiscal policy subindex	5.84	2	Government and fiscal policy subindex	5.84	2
State and local taxes per capita /income per capita	5.35	16			
Workers' compensation premium rates	5.82	11			
Bond rating: composite	6.26	1			
Average weekly payment to insured unemployed	6.47	4			
Full-time-equivalent state and local government employees per 100 residents	6.16	3			
Security subindex	4.49	39	Security subindex	4.49	39
Crime index change 2012-2013, %	5.28	18	Crime index, per 100,000 inhabitants	4.31	41
			The BGA Integrity Index	3.63	49
Infrastructure subindex	5.03	27	Infrastructure subindex	5.03	27
High-speed lines per 1000	4.98	16	Average travel time to work	4.77	31
Air passengers per capita	5.42	10	Electricity Prices per kWh	5.18	31
			Average rent of 2 bedroom apartment	4.70	34
Human resources subindex	4.61	36	Human resources subindex	4.61	36
% of population enrolled in degree-granting institutions	6.84	3	% of population without health insurance	4.21	41
Infant mortality rate, deaths per 1000 live births	5.20	20	% of population aged 25 and over that graduated from high school	4.13	40
			Unemployment rate, not seasonally adjusted	3.53	46
			% of adults who are in the labor force	4.34	41
			Rate of active physicians per 100,000 inhabitants	4.47	33
			% of students at or above proficient in mathematics, grade 4 - public schools	4.14	40
Technology subindex	4.77	30	Technology subindex	4.77	30
Scientists and engineers as % of labor force	5.52	13	NIH support to institutions per capita	4.40	37
Employment in high-tech industry as % of total employment	5.54	11	Science & Engineering grad. students 100,000 inhabitants	4.59	33
			S&E degrees awarded per 100,000 inhabitants	4.61	31
Business incubation subindex	4.86	34	Business incubation subindex	4.86	34
% of labor force that is represented by unions	5.92	11	Total deposits (Commercial banks and Savings institutions) per capita	4.68	46
Pacific Research Institute Tort Index	5.42	16	Employer firm births per 100,000 inhabitants	4.40	35
Cost of Labor Adjusted for Educ. Attainment	5.63	17	Minimum wage	3.55	45
Openness subindex	4.93	28	Openness subindex	4.93	28
% of population born abroad	5.68	14	Incoming foreign direct investment per capita, dollars	4.46	34
Environmental policy subindex	5.21	19	Environmental policy subindex	5.21	19
Carbon emission per 1000 sq. miles	5.70	15			

2018

COMPETITIVE ADVANTAGES			COMPETITIVE DISADVANTAGES		
Subindex/Variable	Index	Rank	Subindex/Variable	Index	Rank
Government and fiscal policy subindex			Government and fiscal policy subindex		
Workers' compensation premium rates	6.61	3	State and local taxes per capita /income per capita	4.51	34
Average weekly payment to insured unemployed	5.95	12	Full-time-equivalent state and local government employees per 100 residents	4.76	35
Security subindex			Security subindex		
Crime index change 2012-2013, %	5.25	19	Crime index, per 100,000 inhabitants	3.87	47
The BGA Integrity Index	5.34	13	Murder index, per 100,000 inhabitants	3.89	43
Infrastructure subindex			Infrastructure subindex		
Average travel time to work	5.70	10	High-speed lines per 1000	4.50	34
Electricity Prices per kWh	5.93	3	Air passengers per capita	4.28	45
Average rent of 2 bedroom apartment	6.17	2			
Human resources subindex			Human resources subindex		
	4.14	45	% of population aged 25 and over that graduated from high school	4.01	41
			% of population enrolled in degree-granting institutions	4.51	35
			% of adults who are in the labor force	3.66	46
			Infant mortality rate, deaths per 1000 live births	3.07	49
			Rate of active physicians per 100,000 inhabitants	3.85	47
			% of students at or above proficient in mathematics, grade 4 - public schools	3.99	41
Technology subindex			Technology subindex		
	4.24	48	Academic Science and Engineering R&D per \$1,000 GSP	4.08	45
			NIH support to institutions per capita	4.19	47
			Patents per 100,000 inhabitants	4.40	34
			Science & Engineering grad. students 100,000 inhabitants	4.44	36
			S&E degrees awarded per 100,000 inhabitants	4.50	34
			Scientists and engineers as % of labor force	3.78	47
			Employment in high-tech industry as % of total employment	3.81	48
Business incubation subindex			Business incubation subindex		
% of labor force that is represented by unions	6.15	3	Total deposits (Commercial banks and Savings institutions) per capita	4.72	35
Cost of Labor Adjusted for Educ. Attainment	6.10	5	Venture capital per capita	4.60	42
			Employer firm births per 100,000 inhabitants	4.55	31
Openness subindex			Openness subindex		
	4.38	40	Exports per capita, dollars	4.26	37
			% of population born abroad	4.28	37
Environmental policy subindex			Environmental policy subindex		
Air Quality Index	5.64	10		5.48	13

CALIFORNIA

Index **Overall Rank**
5.32 **20**

2018

BHI

COMPETITIVE ADVANTAGES			COMPETITIVE DISADVANTAGES		
<i>Subindex/Variable</i>	<i>Index</i>	<i>Rank</i>	<i>Subindex/Variable</i>	<i>Index</i>	<i>Rank</i>
Government and fiscal policy subindex	4.52	44	Government and fiscal policy subindex	4.52	44
Budget deficit, % of GSP	5.57	12	State and local taxes per capita /income per capita	3.96	46
Full-time-equivalent state and local government employees per 100 residents	5.66	12	Workers' compensation premium rates	2.72	49
			Bond rating: composite	4.04	43
Security subindex	4.59	35	Security subindex	4.59	35
			Crime index, per 100,000 inhabitants	4.48	37
			Crime index change 2012-2013, %	4.87	35
			The BGA Integrity Index	3.95	45
Infrastructure subindex	4.67	41	Infrastructure subindex	4.67	41
High-speed lines per 1000	9.60	1	Quality of Roads	3.19	47
Air passengers per capita	5.23	15	Average travel time to work	3.74	46
			Electricity Prices per kWh	3.61	46
			Average rent of 2 bedroom apartment	2.65	49
Human resources subindex	4.75	31	Human resources subindex	4.75	31
% of population enrolled in degree-granting institutions	5.46	14	% of population aged 25 and over that graduated from high school	2.72	50
Infant mortality rate, deaths per 1000 live births	6.47	3	Unemployment rate, not seasonally adjusted	4.51	36
Rate of active physicians per 100,000 inhabitants	5.15	19	% of adults who are in the labor force	4.69	33
			% of students at or above proficient in mathematics, grade 4 - public schools	3.69	45
Technology subindex	5.31	10	Technology subindex	5.31	10
NIH support to institutions per capita	5.47	9	Academic Science and Engineering R&D per \$1,000 GSP	4.60	34
Patents per 100,000 inhabitants	5.14	14			
Science & Engineering grad. students 100,000 inhabitants	5.17	18			
Scientists and engineers as % of labor force	6.00	7			
Employment in high-tech industry as % of total employment	6.61	5			
Business incubation subindex	5.60	4	Business incubation subindex	5.60	4
Total deposits (Commercial banks and Savings institutions) per capita	4.85	14	% of labor force that is represented by unions	4.10	42
Venture capital per capita	10.00	1	Minimum wage	3.19	48
Employer firm births per 100,000 inhabitants	7.86	1	Pacific Research Institute Tort Index	4.24	41
IPO volume, in \$ per capita	5.95	9	Cost of Labor Adjusted for Educ. Attainment	4.64	36
Openness subindex	5.97	5	Openness subindex	5.97	5
Exports per capita, dollars	5.14	20			
% of population born abroad	7.88	1			
Environmental policy subindex	5.26	17	Environmental policy subindex	5.26	17
Toxic release inventory, pounds per sq. miles	5.80	8	Air Quality Index	4.42	40
Carbon emission per 1000 sq. miles	5.56	20			

State Index

COLORADO

Index Overall Rank
5.92 10



2018					
COMPETITIVE ADVANTAGES			COMPETITIVE DISADVANTAGES		
Subindex/Variable	Index	Rank	Subindex/Variable	Index	Rank
Government and fiscal policy subindex	5.34	8	Government and fiscal policy subindex	5.34	8
State and local taxes per capita /income per capita	5.29	17	Average weekly payment to insured unemployed	3.82	44
Workers' compensation premium rates	5.56	16			
Bond rating: composite	6.26	1			
Budget deficit, % of GSP	5.57	12			
Full-time-equivalent state and local government employees per 100 residents	5.55	13			
Security subindex	4.95	25	Security subindex	4.95	25
			Crime index, per 100,000 inhabitants	4.80	31
			Crime index change 2012-2013, %	4.93	33
			The BGA Integrity Index	4.75	31
Infrastructure subindex	4.98	29	Infrastructure subindex	4.98	29
High-speed lines per 1000	4.88	20	Average travel time to work	4.72	32
Air passengers per capita	6.40	4	Average rent of 2 bedroom apartment	3.64	46
Human resources subindex	5.56	10	Human resources subindex	5.56	10
% of population aged 25 and over that graduated from high school	5.81	14			
% of adults who are in the labor force	6.46	4			
Infant mortality rate, deaths per 1000 live births	6.22	6			
Rate of active physicians per 100,000 inhabitants	5.27	16			
% of students at or above proficient in mathematics, grade 4 - public schools	5.34	15			
Technology subindex	5.59	6	Technology subindex	5.59	6
Academic Science and Engineering R&D per \$1,000 GSP	5.24	16			
Patents per 100,000 inhabitants	4.73	20			
Science & Engineering grad. students 100,000 inhabitants	6.00	7			
S&E degrees awarded per 100,000 inhabitants	5.61	13			
Scientists and engineers as % of labor force	7.04	4			
Employment in high-tech industry as % of total employment	7.02	3			
Business incubation subindex	5.01	27	Business incubation subindex	5.01	27
Venture capital per capita	5.28	6	% of labor force that is represented by unions	4.84	31
Employer firm births per 100,000 inhabitants	6.61	3	Minimum wage	3.77	43
IPO volume, in \$ per capita	6.16	6	Pacific Research Institute Tort Index	4.63	32
			Cost of Labor Adjusted for Educ. Attainment	4.07	39
Openness subindex	4.56	36	Openness subindex	4.56	36
% of population born abroad	5.09	18	Exports per capita, dollars	4.01	42
Environmental policy subindex	5.31	16	Environmental policy subindex	5.31	16
Toxic release inventory, pounds per sq. miles	5.68	17	Air Quality Index	4.56	34
Carbon emission per 1000 sq. miles	5.70	14			

CONNECTICUT

Index **Overall Rank**
4.51 **33**

BHI

2018

COMPETITIVE ADVANTAGES			COMPETITIVE DISADVANTAGES		
<i>Subindex/Variable</i>	<i>Index</i>	<i>Rank</i>	<i>Subindex/Variable</i>	<i>Index</i>	<i>Rank</i>
Government and fiscal policy subindex	4.43	47	Government and fiscal policy subindex	4.43	47
Budget deficit, % of GSP	6.17	4	State and local taxes per capita /income per capita	2.89	49
			Workers' compensation premium rates	4.04	44
			Bond rating: composite	4.04	43
			Average weekly payment to insured unemployed	4.32	39
Security subindex	5.62	5	Security subindex	5.62	5
Crime index, per 100,000 inhabitants	6.00	5			
Crime index change 2012-2013, %	5.60	11			
Murder index, per 100,000 inhabitants	5.91	12			
Infrastructure subindex	4.11	48	Infrastructure subindex	4.11	48
			Quality of Roads	3.71	45
			Air passengers per capita	4.39	39
			Average travel time to work	4.51	36
			Electricity Prices per kWh	3.20	48
			Average rent of 2 bedroom apartment	4.19	39
Human resources subindex	5.50	11	Human resources subindex	5.50	11
% of population without health insurance	5.94	7	% of population enrolled in degree-granting institutions	4.47	36
% of population aged 25 and over that graduated from high school	5.42	19			
% of adults who are in the labor force	5.59	14			
Infant mortality rate, deaths per 1000 live births	6.22	6			
Rate of active physicians per 100,000 inhabitants	6.47	6			
Technology subindex	5.88	5	Technology subindex	5.88	5
Academic Science and Engineering R&D per \$1,000 GSP	5.59	11			
NIH support to institutions per capita	6.19	4			
Patents per 100,000 inhabitants	4.93	17			
Science & Engineering grad. students 100,000 inhabitants	6.54	3			
S&E degrees awarded per 100,000 inhabitants	7.02	2			
Scientists and engineers as % of labor force	5.43	14			
Business incubation subindex	4.34	50	Business incubation subindex	4.34	50
Total deposits (Commercial banks and Savings institutions) per capita	4.88	9	% of labor force that is represented by unions	3.92	45
Venture capital per capita	5.04	9	Minimum wage	3.84	39
IPO volume, in \$ per capita	5.08	15	Pacific Research Institute Tort Index	4.22	42
			Cost of Labor Adjusted for Educ. Attainment	2.95	47
Openness subindex	5.84	8	Openness subindex	5.84	8
Exports per capita, dollars	5.28	18			
Incoming foreign direct investment per capita, dollars	6.41	4			
% of population born abroad	5.82	10			
Environmental policy subindex	4.79	35	Environmental policy subindex	4.79	35
Toxic release inventory, pounds per sq. miles	5.68	16	Carbon emission per 1000 sq. miles	4.55	37
			Air Quality Index	4.15	43

State Index

DELAWARE

Index Overall Rank

2018

4.03

42



COMPETITIVE ADVANTAGES			COMPETITIVE DISADVANTAGES		
<i>Subindex/Variable</i>	<i>Index</i>	<i>Rank</i>	<i>Subindex/Variable</i>	<i>Index</i>	<i>Rank</i>
Government and fiscal policy subindex	4.59	42	Government and fiscal policy subindex	4.59	42
Bond rating: composite	6.26	1	State and local taxes per capita /income per capita	4.48	35
Average weekly payment to insured unemployed	6.12	8	Workers' compensation premium rates	3.45	46
			Budget deficit, % of GSP	3.46	46
			Full-time-equivalent state and local government employees per 100 residents	3.76	48
Security subindex	4.79	30	Security subindex	4.79	30
			Crime index, per 100,000 inhabitants	4.63	35
			Crime index change 2012-2013, %	4.94	32
Infrastructure subindex	4.66	42	Infrastructure subindex	4.66	42
Electricity Prices per kWh	5.44	20	High-speed lines per 1000	4.26	46
			Air passengers per capita	4.02	50
			Average travel time to work	4.64	34
			Average rent of 2 bedroom apartment	4.38	38
Human resources subindex	5.01	27	Human resources subindex	5.01	27
% of population without health insurance	5.91	8	Infant mortality rate, deaths per 1000 live births	4.43	37
% of population enrolled in degree-granting institutions	5.10	19	% of students at or above proficient in mathematics, grade 4 - public schools	4.44	33
Rate of active physicians per 100,000 inhabitants	5.25	17			
Technology subindex	4.76	31	Technology subindex	4.76	31
Science & Engineering grad. students 100,000 inhabitants	5.54	12	Academic Science and Engineering R&D per \$1,000 GSP	4.29	41
Scientists and engineers as % of labor force	6.00	7	S&E degrees awarded per 100,000 inhabitants	4.18	39
Employment in high-tech industry as % of total employment	5.33	17			
Business incubation subindex	5.47	7	Business incubation subindex	5.47	7
Total deposits (Commercial banks and Savings institutions) per capita	8.32	2			
Venture capital per capita	4.96	10			
Employer firm births per 100,000 inhabitants	5.57	13			
Pacific Research Institute Tort Index	5.33	20			
Openness subindex	5.50	12	Openness subindex	5.50	12
Exports per capita, dollars	5.28	17			
Incoming foreign direct investment per capita, dollars	6.23	8			
% of population born abroad	4.99	20			
Environmental policy subindex	3.67	48	Environmental policy subindex	3.67	48
			Toxic release inventory, pounds per sq. miles	4.20	42
			Carbon emission per 1000 sq. miles	2.97	47
			Air Quality Index	3.84	46

FLORIDA

Index Overall Rank

2018

5.23

22



COMPETITIVE ADVANTAGES			COMPETITIVE DISADVANTAGES		
<i>Subindex/Variable</i>	<i>Index</i>	<i>Rank</i>	<i>Subindex/Variable</i>	<i>Index</i>	<i>Rank</i>
Government and fiscal policy subindex	5.50	5	Government and fiscal policy subindex	5.50	5
State and local taxes per capita /income per capita	5.26	18			
Bond rating: composite	6.01	9			
Average weekly payment to insured unemployed	6.27	6			
Full-time-equivalent state and local government employees per 100 residents	6.01	6			
Security subindex	4.44	41	Security subindex	4.44	41
			Crime index change 2012-2013, %	4.47	42
			Murder index, per 100,000 inhabitants	4.72	31
			The BGA Integrity Index	3.69	48
Infrastructure subindex	5.42	10	Infrastructure subindex	5.42	10
Quality of Roads	5.72	12	Average travel time to work	4.23	40
High-speed lines per 1000	7.03	3	Average rent of 2 bedroom apartment	4.18	40
Air passengers per capita	5.76	6			
Electricity Prices per kWh	5.60	13			
Human resources subindex	4.71	33	Human resources subindex	4.71	33
Unemployment rate, not seasonally adjusted	5.49	17	% of population without health insurance	3.42	47
% of students at or above proficient in mathematics, grade 4 - public schools	6.24	7	% of population aged 25 and over that graduated from high school	4.51	33
			% of population enrolled in degree-granting institutions	4.17	40
			% of adults who are in the labor force	4.06	42
Technology subindex	4.49	39	Technology subindex	4.49	39
			Academic Science and Engineering R&D per \$1,000 GSP	4.18	44
			NIH support to institutions per capita	4.33	40
			Science & Engineering grad. students 100,000 inhabitants	4.10	43
			Scientists and engineers as % of labor force	4.25	38
Business incubation subindex	5.22	12	Business incubation subindex	5.22	12
Venture capital per capita	4.78	18	Pacific Research Institute Tort Index	3.28	48
Employer firm births per 100,000 inhabitants	6.45	4			
IPO volume, in \$ per capita	5.35	13			
% of labor force that is represented by unions	5.86	13			
Cost of Labor Adjusted for Educ. Attainment	6.09	6			
Openness subindex	5.62	10	Openness subindex	5.62	10
Exports per capita, dollars	5.49	15	Incoming foreign direct investment per capita, dollars	4.54	33
% of population born abroad	6.84	4			
Environmental policy subindex	4.31	41	Environmental policy subindex	4.31	41
			Toxic release inventory, pounds per sq. miles	4.79	35
			Carbon emission per 1000 sq. miles	3.94	42
			Air Quality Index	4.19	42



2018

COMPETITIVE ADVANTAGES			COMPETITIVE DISADVANTAGES		
<i>Subindex/Variable</i>	<i>Index</i>	<i>Rank</i>	<i>Subindex/Variable</i>	<i>Index</i>	<i>Rank</i>
Government and fiscal policy subindex	5.08	23	Government and fiscal policy subindex	5.08	23
State and local taxes per capita /income per capita	5.13	20	Workers' compensation premium rates	3.90	45
Bond rating: composite	6.26	1	Budget deficit, % of GSP	3.76	44
Average weekly payment to insured unemployed	5.65	13			
Full-time-equivalent state and local government employees per 100 residents	5.77	9			
Security subindex	4.77	33	Security subindex	4.77	33
			Crime index change 2012-2013, %	4.93	33
			Murder index, per 100,000 inhabitants	4.34	37
			The BGA Integrity Index	4.56	33
Infrastructure subindex	5.41	11	Infrastructure subindex	5.41	11
Quality of Roads	6.50	1	Average travel time to work	3.97	43
High-speed lines per 1000	5.51	8			
Air passengers per capita	6.09	5			
Human resources subindex	4.23	44	Human resources subindex	4.23	44
			% of population without health insurance	3.19	48
			% of population aged 25 and over that graduated from high school	4.17	39
			% of population enrolled in degree-granting institutions	4.16	41
			Infant mortality rate, deaths per 1000 live births	3.92	42
			Rate of active physicians per 100,000 inhabitants	4.23	40
			% of students at or above proficient in mathematics, grade 4 - public schools	4.29	36
Technology subindex	5.07	19	Technology subindex	5.07	19
Academic Science and Engineering R&D per \$1,000 GSP	5.21	18	S&E degrees awarded per 100,000 inhabitants	4.14	41
Patents per 100,000 inhabitants	5.94	8			
Scientists and engineers as % of labor force	5.21	19			
Employment in high-tech industry as % of total employment	5.44	14			
Business incubation subindex	5.43	8	Business incubation subindex	5.43	8
Venture capital per capita	4.86	15			
Employer firm births per 100,000 inhabitants	5.38	19			
IPO volume, in \$ per capita	6.31	5			
% of labor force that is represented by unions	6.09	6			
Minimum wage	5.92	1			
Openness subindex	5.16	21	Openness subindex	5.16	21
Incoming foreign direct investment per capita, dollars	5.55	17			
% of population born abroad	5.14	16			
Environmental policy subindex	5.25	18	Environmental policy subindex	5.25	18
Air Quality Index	5.86	9	Toxic release inventory, pounds per sq. miles	4.98	31
			Carbon emission per 1000 sq. miles	4.91	33

2018

COMPETITIVE ADVANTAGES			COMPETITIVE DISADVANTAGES		
Subindex/Variable	Index	Rank	Subindex/Variable	Index	Rank
Government and fiscal policy subindex	4.45	46	Government and fiscal policy subindex	4.45	46
Bond rating: composite	5.27	19	State and local taxes per capita /income per capita	4.45	36
Budget deficit, % of GSP	5.87	7	Workers' compensation premium rates	4.41	38
			Average weekly payment to insured unemployed	2.69	49
			Full-time-equivalent state and local government employees per 100 residents	4.03	46
Security subindex	5.35	18	Security subindex	5.35	18
Crime index, per 100,000 inhabitants	5.74	14			
Murder index, per 100,000 inhabitants	5.83	16			
Infrastructure subindex	3.87	50	Infrastructure subindex	3.87	50
Air passengers per capita	9.10	1	Quality of Roads	2.93	48
			High-speed lines per 1000	4.33	40
			Average travel time to work	4.23	40
			Electricity Prices per kWh	0.59	50
			Average rent of 2 bedroom apartment	2.05	50
Human resources subindex	5.42	14	Human resources subindex	5.42	14
% of population without health insurance	6.43	2	% of population enrolled in degree-granting institutions	3.79	48
% of population aged 25 and over that graduated from high school	5.84	13	% of students at or above proficient in mathematics, grade 4 - public schools	4.74	32
Unemployment rate, not seasonally adjusted	6.35	3			
Infant mortality rate, deaths per 1000 live births	5.54	14			
Rate of active physicians per 100,000 inhabitants	5.78	10			
Technology subindex	4.29	43	Technology subindex	4.29	43
			NIH support to institutions per capita	4.58	32
			Patents per 100,000 inhabitants	4.35	40
			Science & Engineering grad. students 100,000 inhabitants	4.31	40
			S&E degrees awarded per 100,000 inhabitants	3.95	45
			Scientists and engineers as % of labor force	4.09	42
			Employment in high-tech industry as % of total employment	3.91	45
Business incubation subindex	4.79	36	Business incubation subindex	4.79	36
Total deposits (Commercial banks and Savings institutions) per capita	4.81	17	Venture capital per capita	4.58	45
IPO volume, in \$ per capita	6.64	4	Employer firm births per 100,000 inhabitants	4.32	38
Pacific Research Institute Tort Index	6.99	2	% of labor force that is represented by unions	2.44	50
			Minimum wage	3.84	39
			Cost of Labor Adjusted for Educ. Attainment	4.73	35
Openness subindex	5.39	16	Openness subindex	5.39	16
Incoming foreign direct investment per capita, dollars	6.11	9	Exports per capita, dollars	3.60	49
% of population born abroad	6.48	6			
Environmental policy subindex	5.74	7	Environmental policy subindex	5.74	7
Air Quality Index	6.94	4	Carbon emission per 1000 sq. miles	4.78	34

2018

COMPETITIVE ADVANTAGES			COMPETITIVE DISADVANTAGES		
<i>Subindex/Variable</i>	<i>Index</i>	<i>Rank</i>	<i>Subindex/Variable</i>	<i>Index</i>	<i>Rank</i>
Government and fiscal policy subindex	4.86	35	Government and fiscal policy subindex	4.86	35
Bond rating: composite	5.52	11	Budget deficit, % of GSP	3.16	48
Average weekly payment to insured unemployed	5.22	19			
Full-time-equivalent state and local government employees per 100 residents	5.46	19			
Security subindex	5.46	10	Security subindex	5.46	10
Crime index, per 100,000 inhabitants	5.88	11	The BGA Integrity Index	4.44	37
Crime index change 2012-2013, %	5.48	13			
Murder index, per 100,000 inhabitants	6.04	9			
Infrastructure subindex	5.47	5	Infrastructure subindex	5.47	5
Quality of Roads	6.50	1	High-speed lines per 1000	4.34	39
Average travel time to work	5.96	9	Air passengers per capita	4.56	32
Electricity Prices per kWh	5.79	5			
Average rent of 2 bedroom apartment	5.64	19			
Human resources subindex	5.17	21	Human resources subindex	5.17	21
% of population aged 25 and over that graduated from high school	5.42	19	% of population without health insurance	4.05	43
Unemployment rate, not seasonally adjusted	6.11	6	Rate of active physicians per 100,000 inhabitants	3.57	49
% of population enrolled in degree-granting institutions	5.74	10			
% of adults who are in the labor force	5.31	17			
Infant mortality rate, deaths per 1000 live births	6.13	9			
Technology subindex	4.59	38	Technology subindex	4.59	38
S&E degrees awarded per 100,000 inhabitants	5.92	6	Academic Science and Engineering R&D per \$1,000 GSP	3.88	47
Employment in high-tech industry as % of total employment	5.44	14	NIH support to institutions per capita	4.04	50
			Patents per 100,000 inhabitants	4.34	42
			Science & Engineering grad. students 100,000 inhabitants	3.89	46
Business incubation subindex	5.55	5	Business incubation subindex	5.55	5
Employer firm births per 100,000 inhabitants	6.70	2	Total deposits (Commercial banks and Savings institutions) per capita	4.65	50
% of labor force that is represented by unions	6.09	6	Venture capital per capita	4.62	35
Minimum wage	5.92	1			
Pacific Research Institute Tort Index	6.04	7			
Cost of Labor Adjusted for Educ. Attainment	6.00	8			
Openness subindex	4.07	46	Openness subindex	4.07	46
			Exports per capita, dollars	4.30	36
			Incoming foreign direct investment per capita, dollars	3.45	48
Environmental policy subindex	6.30	2	Environmental policy subindex	6.30	2
Carbon emission per 1000 sq. miles	6.10	3			
Air Quality Index	7.41	1			

COMPETITIVE ADVANTAGES			COMPETITIVE DISADVANTAGES		
<i>Subindex/Variable</i>	<i>Index</i>	<i>Rank</i>	<i>Subindex/Variable</i>	<i>Index</i>	<i>Rank</i>
Government and fiscal policy subindex	4.42	48	Government and fiscal policy subindex	4.42	48
Budget deficit, % of GSP	6.17	4	State and local taxes per capita /income per capita	3.99	44
Full-time-equivalent state and local government employees per 100 residents	6.01	7	Bond rating: composite	1.09	50
			Average weekly payment to insured unemployed	4.43	37
Security subindex	4.57	36	Security subindex	4.57	36
			Crime index, per 100,000 inhabitants	4.76	32
			Murder index, per 100,000 inhabitants	4.01	42
			The BGA Integrity Index	4.45	36
Infrastructure subindex	5.12	24	Infrastructure subindex	5.12	24
High-speed lines per 1000	5.86	5	Average travel time to work	3.81	45
Air passengers per capita	5.67	7	Average rent of 2 bedroom apartment	4.91	31
Human resources subindex	4.95	29	Human resources subindex	4.95	29
% of population without health insurance	5.39	19	Unemployment rate, not seasonally adjusted	4.27	39
% of adults who are in the labor force	5.16	20			
Rate of active physicians per 100,000 inhabitants	5.24	18			
Technology subindex	5.16	17	Technology subindex	5.16	17
Patents per 100,000 inhabitants	4.94	16	Academic Science and Engineering R&D per \$1,000 GSP	4.42	37
Science & Engineering grad. students 100,000 inhabitants	6.01	6			
S&E degrees awarded per 100,000 inhabitants	5.87	7			
Business incubation subindex	4.52	43	Business incubation subindex	4.52	43
Total deposits (Commercial banks and Savings institutions) per capita	4.88	8	Employer firm births per 100,000 inhabitants	4.46	33
Venture capital per capita	4.93	11	% of labor force that is represented by unions	4.31	37
			Pacific Research Institute Tort Index	3.40	47
			Cost of Labor Adjusted for Educ. Attainment	4.55	37
Openness subindex	6.22	4	Openness subindex	6.22	4
Exports per capita, dollars	7.12	3			
Incoming foreign direct investment per capita, dollars	5.77	15			
% of population born abroad	5.78	11			
Environmental policy subindex	4.28	42	Environmental policy subindex	4.28	42
			Toxic release inventory, pounds per sq. miles	3.81	44
			Carbon emission per 1000 sq. miles	4.34	39

INDIANA

Index Overall Rank
4.96 27



2018

COMPETITIVE ADVANTAGES			COMPETITIVE DISADVANTAGES		
Subindex/Variable	Index	Rank	Subindex/Variable	Index	Rank
Government and fiscal policy subindex	5.71	3	Government and fiscal policy subindex	5.71	3
Workers' compensation premium rates	6.67	2			
Bond rating: composite	6.26	1			
Average weekly payment to insured unemployed	5.63	14			
Full-time-equivalent state and local government employees per 100 residents	6.17	2			
Security subindex	4.45	40	Security subindex	4.45	40
			Crime index change 2012-2013, %	4.35	45
			Murder index, per 100,000 inhabitants	4.18	40
			The BGA Integrity Index	4.37	40
Infrastructure subindex	5.32	15	Infrastructure subindex	5.32	15
Quality of Roads	6.16	4	Air passengers per capita	4.36	42
High-speed lines per 1000	4.95	18			
Average travel time to work	5.21	19			
Electricity Prices per kWh	5.45	19			
Average rent of 2 bedroom apartment	5.78	12			
Human resources subindex	4.96	28	Human resources subindex	4.96	28
Unemployment rate, not seasonally adjusted	5.25	20	% of population aged 25 and over that graduated from high school	4.70	32
% of population enrolled in degree-granting institutions	5.05	20	Infant mortality rate, deaths per 1000 live births	3.84	44
% of adults who are in the labor force	5.41	16	Rate of active physicians per 100,000 inhabitants	4.27	38
% of students at or above proficient in mathematics, grade 4 - public schools	6.24	7			
Technology subindex	5.01	22	Technology subindex	5.01	22
Academic Science and Engineering R&D per \$1,000 GSP	5.21	17	NIH support to institutions per capita	4.51	34
Patents per 100,000 inhabitants	4.84	19	Scientists and engineers as % of labor force	4.31	36
Science & Engineering grad. students 100,000 inhabitants	5.66	10	Employment in high-tech industry as % of total employment	4.06	39
S&E degrees awarded per 100,000 inhabitants	5.80	11			
Business incubation subindex	5.14	15	Business incubation subindex	5.14	15
IPO volume, in \$ per capita	6.80	3	Total deposits (Commercial banks and Savings institutions) per capita	4.69	41
Minimum wage	5.92	1	Employer firm births per 100,000 inhabitants	3.46	49
Cost of Labor Adjusted for Educ. Attainment	5.34	20			
Openness subindex	5.44	15	Openness subindex	5.44	15
Exports per capita, dollars	5.58	14	% of population born abroad	4.34	32
Incoming foreign direct investment per capita, dollars	6.40	5			
Environmental policy subindex	3.15	50	Environmental policy subindex	3.15	50
Air Quality Index	5.24	16	Toxic release inventory, pounds per sq. miles	1.82	50
			Carbon emission per 1000 sq. miles	2.38	50

State Index

COMPETITIVE ADVANTAGES			COMPETITIVE DISADVANTAGES		
<i>Subindex/Variable</i>	<i>Index</i>	<i>Rank</i>	<i>Subindex/Variable</i>	<i>Index</i>	<i>Rank</i>
Government and fiscal policy subindex			Government and fiscal policy subindex		
Bond rating: composite	4.96	28	Budget deficit, % of GSP	4.96	28
	6.26	1	Average weekly payment to insured unemployed	3.76	44
				4.25	41
Security subindex			Security subindex		
Crime index, per 100,000 inhabitants	6.05	3		6.05	3
Crime index change 2012-2013, %	5.73	15			
Murder index, per 100,000 inhabitants	6.74	2			
The BGA Integrity Index	6.16	5			
	5.58	11			
Infrastructure subindex			Infrastructure subindex		
Quality of Roads	5.36	13	High-speed lines per 1000	5.36	13
Average travel time to work	5.98	7	Air passengers per capita	4.53	31
Average rent of 2 bedroom apartment	6.37	7	Electricity Prices per kWh	4.28	44
	5.94	8		5.03	34
Human resources subindex			Human resources subindex		
% of population without health insurance	5.91	4	Rate of active physicians per 100,000 inhabitants	5.91	4
% of population aged 25 and over that graduated from high school	6.14	6		4.04	43
Unemployment rate, not seasonally adjusted	5.96	9			
% of population enrolled in degree-granting institutions	6.60	1			
% of adults who are in the labor force	6.70	4			
Infant mortality rate, deaths per 1000 live births	6.41	5			
% of students at or above proficient in mathematics, grade 4 - public schools	5.54	14			
	5.94	10			
Technology subindex			Technology subindex		
Academic Science and Engineering R&D per \$1,000 GSP	4.99	24	Scientists and engineers as % of labor force	4.99	24
Science & Engineering grad. students 100,000 inhabitants	5.47	13	Employment in high-tech industry as % of total employment	4.43	34
S&E degrees awarded per 100,000 inhabitants	5.51	14		4.26	35
	5.32	16			
Business incubation subindex			Business incubation subindex		
Minimum wage	5.03	26	Venture capital per capita	5.03	26
Pacific Research Institute Tort Index	5.92	1	Employer firm births per 100,000 inhabitants	4.62	36
	5.78	10	Cost of Labor Adjusted for Educ. Attainment	4.36	36
				4.94	31
Openness subindex			Openness subindex		
Exports per capita, dollars	4.67	33	Incoming foreign direct investment per capita, dollars	4.67	33
	5.31	16	% of population born abroad	4.36	36
				4.34	32
Environmental policy subindex			Environmental policy subindex		
Air Quality Index	5.79	6		5.79	6
	6.60	6			

KANSAS

Index Overall Rank

5.62 13

2018



COMPETITIVE ADVANTAGES			COMPETITIVE DISADVANTAGES		
<i>Subindex/Variable</i>	<i>Index</i>	<i>Rank</i>	<i>Subindex/Variable</i>	<i>Index</i>	<i>Rank</i>
Government and fiscal policy subindex	4.97	27	Government and fiscal policy subindex	4.97	27
Workers' compensation premium rates	6.11	6	Bond rating: composite	4.04	43
Budget deficit, % of GSP	5.57	12	Average weekly payment to insured unemployed	4.51	36
			Full-time-equivalent state and local government employees per 100 residents	4.61	36
Security subindex	5.45	11	Security subindex	5.45	11
Crime index change 2012-2013, %	5.35	16	Crime index, per 100,000 inhabitants	4.54	36
The BGA Integrity Index	6.65	3			
Infrastructure subindex	5.34	14	Infrastructure subindex	5.34	14
Quality of Roads	5.72	12	Air passengers per capita	4.15	47
Average travel time to work	6.32	8			
Electricity Prices per kWh	5.56	15			
Average rent of 2 bedroom apartment	5.67	17			
Human resources subindex	5.23	19	Human resources subindex	5.23	19
% of population aged 25 and over that graduated from high school	5.46	17	% of population without health insurance	4.80	31
Unemployment rate, not seasonally adjusted	5.49	17	Rate of active physicians per 100,000 inhabitants	4.21	41
% of population enrolled in degree-granting institutions	5.85	9			
% of adults who are in the labor force	5.86	13			
% of students at or above proficient in mathematics, grade 4 - public schools	5.34	15			
Technology subindex	4.69	33	Technology subindex	4.69	33
Science & Engineering grad. students 100,000 inhabitants	5.24	17	NIH support to institutions per capita	4.48	35
			Patents per 100,000 inhabitants	4.45	31
			S&E degrees awarded per 100,000 inhabitants	4.11	43
			Scientists and engineers as % of labor force	4.76	31
Business incubation subindex	5.07	21	Business incubation subindex	5.07	21
Minimum wage	5.92	1			
Pacific Research Institute Tort Index	5.59	12			
Openness subindex	4.62	35	Openness subindex	4.62	35
			Exports per capita, dollars	4.43	31
Environmental policy subindex	5.35	15	Environmental policy subindex	5.35	15
Toxic release inventory, pounds per sq. miles	5.79	9	Air Quality Index	4.58	33
Carbon emission per 1000 sq. miles	5.69	16			

State Index

KENTUCKY

Index **Overall Rank**
4.81 **31**

2018

COMPETITIVE ADVANTAGES			COMPETITIVE DISADVANTAGES		
<i>Subindex/Variable</i>	<i>Index</i>	<i>Rank</i>	<i>Subindex/Variable</i>	<i>Index</i>	<i>Rank</i>
Government and fiscal policy subindex			Government and fiscal policy subindex		
Workers' compensation premium rates	5.40	18	Bond rating: composite	3.30	48
Budget deficit, % of GSP	7.38	1			
Security subindex			Security subindex		
Crime index, per 100,000 inhabitants	5.97	7	Murder index, per 100,000 inhabitants	4.59	33
The BGA Integrity Index	5.18	17			
Infrastructure subindex			Infrastructure subindex		
Quality of Roads	6.07	6			
Average travel time to work	5.29	16			
Electricity Prices per kWh	5.79	4			
Average rent of 2 bedroom apartment	6.11	4			
Human resources subindex			Human resources subindex		
% of population without health insurance	5.84	13	% of population aged 25 and over that graduated from high school	3.86	44
			Unemployment rate, not seasonally adjusted	4.27	39
			% of adults who are in the labor force	3.86	43
			Infant mortality rate, deaths per 1000 live births	4.52	35
			Rate of active physicians per 100,000 inhabitants	4.27	37
Technology subindex			Technology subindex		
	4.27	44	Academic Science and Engineering R&D per \$1,000 GSP	4.33	39
			NIH support to institutions per capita	4.59	31
			Patents per 100,000 inhabitants	4.42	32
			Science & Engineering grad. students 100,000 inhabitants	4.04	44
			S&E degrees awarded per 100,000 inhabitants	4.14	40
			Scientists and engineers as % of labor force	3.94	44
			Employment in high-tech industry as % of total employment	4.11	38
Business incubation subindex			Business incubation subindex		
Minimum wage	5.92	1	Total deposits (Commercial banks and Savings institutions) per capita	4.68	44
Cost of Labor Adjusted for Educ. Attainment	5.87	11	Venture capital per capita	4.61	39
			Employer firm births per 100,000 inhabitants	4.04	41
			Pacific Research Institute Tort Index	4.47	36
Openness subindex			Openness subindex		
Exports per capita, dollars	6.01	10	% of population born abroad	4.11	43
Incoming foreign direct investment per capita, dollars	6.37	6			
Environmental policy subindex			Environmental policy subindex		
	4.38	40	Toxic release inventory, pounds per sq. miles	4.49	40
			Carbon emission per 1000 sq. miles	3.93	43

BHI

State Index

LOUISIANA

Index Overall Rank

3.14 49

2018



COMPETITIVE ADVANTAGES			COMPETITIVE DISADVANTAGES		
Subindex/Variable	Index	Rank	Subindex/Variable	Index	Rank
Government and fiscal policy subindex	5.20	16	Government and fiscal policy subindex	5.20	16
State and local taxes per capita /income per capita	6.14	7	Workers' compensation premium rates	4.34	41
Budget deficit, % of GSP	5.27	19	Bond rating: composite	4.29	42
Average weekly payment to insured unemployed	6.71	2	Full-time-equivalent state and local government employees per 100 residents	4.44	39
Security subindex	4.10	48	Security subindex	4.10	48
The BGA Integrity Index	5.35	12	Crime index, per 100,000 inhabitants	3.91	45
			Murder index, per 100,000 inhabitants	2.16	50
Infrastructure subindex	5.05	26	Infrastructure subindex	5.05	26
Electricity Prices per kWh	6.07	1	Quality of Roads	4.50	38
			Average travel time to work	4.72	32
Human resources subindex	3.98	49	Human resources subindex	3.98	49
			% of population aged 25 and over that graduated from high school	3.48	46
			Unemployment rate, not seasonally adjusted	3.53	46
			% of population enrolled in degree-granting institutions	4.16	42
			% of adults who are in the labor force	3.71	45
			Infant mortality rate, deaths per 1000 live births	4.01	40
			% of students at or above proficient in mathematics, grade 4 - public schools	3.09	49
Technology subindex	4.25	46	Technology subindex	4.25	46
			Academic Science and Engineering R&D per \$1,000 GSP	4.34	38
			NIH support to institutions per capita	4.39	38
			Science & Engineering grad. students 100,000 inhabitants	4.32	39
			S&E degrees awarded per 100,000 inhabitants	3.90	46
			Scientists and engineers as % of labor force	3.39	49
			Employment in high-tech industry as % of total employment	3.96	42
Business incubation subindex	5.21	13	Business incubation subindex	5.21	13
IPO volume, in \$ per capita	5.00	17	Total deposits (Commercial banks and Savings institutions) per capita	4.73	31
% of labor force that is represented by unions	6.06	9	Venture capital per capita	4.56	49
Minimum wage	5.92	1	Employer firm births per 100,000 inhabitants	3.85	44
Pacific Research Institute Tort Index	5.75	11			
Cost of Labor Adjusted for Educ. Attainment	5.81	13			
Openness subindex	5.24	19	Openness subindex	5.24	19
Exports per capita, dollars	7.30	1	Incoming foreign direct investment per capita, dollars	4.24	37
			% of population born abroad	4.16	40
Environmental policy subindex	3.64	49	Environmental policy subindex	3.64	49
			Toxic release inventory, pounds per sq. miles	2.87	47
			Carbon emission per 1000 sq. miles	3.52	46
			Air Quality Index	4.53	36

2018

COMPETITIVE ADVANTAGES			COMPETITIVE DISADVANTAGES		
<i>Subindex/Variable</i>	<i>Index</i>	<i>Rank</i>	<i>Subindex/Variable</i>	<i>Index</i>	<i>Rank</i>
Government and fiscal policy subindex	4.77	40	Government and fiscal policy subindex	4.77	40
			State and local taxes per capita /income per capita	4.42	38
			Workers' compensation premium rates	4.75	32
			Budget deficit, % of GSP	4.36	37
Security subindex	5.53	7	Security subindex	5.53	7
Crime index, per 100,000 inhabitants	6.60	1	Crime index change 2012-2013, %	4.42	43
Murder index, per 100,000 inhabitants	6.12	6			
Infrastructure subindex	4.82	38	Infrastructure subindex	4.82	38
Average rent of 2 bedroom apartment	5.72	15	High-speed lines per 1000	4.31	43
			Air passengers per capita	4.45	33
			Electricity Prices per kWh	4.48	41
Human resources subindex	5.28	17	Human resources subindex	5.28	17
% of population aged 25 and over that graduated from high school	6.23	7	% of population enrolled in degree-granting institutions	4.38	38
Unemployment rate, not seasonally adjusted	5.25	20			
Infant mortality rate, deaths per 1000 live births	5.20	20			
Rate of active physicians per 100,000 inhabitants	6.07	7			
Technology subindex	4.60	36	Technology subindex	4.60	36
NIH support to institutions per capita	4.99	18	Academic Science and Engineering R&D per \$1,000 GSP	3.70	49
			Patents per 100,000 inhabitants	4.32	45
S&E degrees awarded per 100,000 inhabitants	6.84	3	Science & Engineering grad. students 100,000 inhabitants	3.69	49
			Scientists and engineers as % of labor force	4.28	37
			Employment in high-tech industry as % of total employment	4.06	39
Business incubation subindex	4.94	31	Business incubation subindex	4.94	31
Employer firm births per 100,000 inhabitants	5.87	11	Total deposits (Commercial banks and Savings institutions) per capita	4.71	38
Pacific Research Institute Tort Index	6.10	6	Venture capital per capita	4.60	41
Cost of Labor Adjusted for Educ. Attainment	5.66	16	% of labor force that is represented by unions	4.30	39
			Minimum wage	3.92	38
Openness subindex	4.74	30	Openness subindex	4.74	30
Incoming foreign direct investment per capita, dollars	5.94	12	Exports per capita, dollars	4.20	38
			% of population born abroad	4.08	44
Environmental policy subindex	5.40	14	Environmental policy subindex	5.40	14
Toxic release inventory, pounds per sq. miles	5.74	14	Air Quality Index	4.43	39
Carbon emission per 1000 sq. miles	6.04	5			

COMPETITIVE ADVANTAGES			COMPETITIVE DISADVANTAGES		
<i>Subindex/Variable</i>	<i>Index</i>	<i>Rank</i>	<i>Subindex/Variable</i>	<i>Index</i>	<i>Rank</i>
Government and fiscal policy subindex	4.90	30	Government and fiscal policy subindex	4.90	30
Workers' compensation premium rates	5.76	12	State and local taxes per capita /income per capita	3.99	44
Security subindex	4.42	43	Security subindex	4.42	43
Crime index change 2012-2013, %	5.20	20	Crime index, per 100,000 inhabitants	4.35	40
			Murder index, per 100,000 inhabitants	3.52	48
			The BGA Integrity Index	4.62	32
Infrastructure subindex	4.43	44	Infrastructure subindex	4.43	44
Quality of Roads	5.72	12	Average travel time to work	2.81	49
High-speed lines per 1000	4.96	17	Electricity Prices per kWh	5.01	35
			Average rent of 2 bedroom apartment	3.18	48
Human resources subindex	5.47	12	Human resources subindex	5.47	12
% of population without health insurance	5.71	15	Infant mortality rate, deaths per 1000 live births	4.60	33
% of adults who are in the labor force	5.89	12			
Rate of active physicians per 100,000 inhabitants	7.09	2			
% of students at or above proficient in mathematics, grade 4 - public schools	5.34	15			
Technology subindex	7.37	2	Technology subindex	7.37	2
Academic Science and Engineering R&D per \$1,000 GSP	9.31	1			
NIH support to institutions per capita	7.58	2			
Science & Engineering grad. students 100,000 inhabitants	6.89	2			
S&E degrees awarded per 100,000 inhabitants	9.11	1			
Scientists and engineers as % of labor force	7.44	1			
Employment in high-tech industry as % of total employment	6.81	4			
Business incubation subindex	4.46	44	Business incubation subindex	4.46	44
Venture capital per capita	5.14	8	Employer firm births per 100,000 inhabitants	4.44	34
IPO volume, in \$ per capita	4.87	19	% of labor force that is represented by unions	4.82	32
			Minimum wage	3.84	39
			Cost of Labor Adjusted for Educ. Attainment	2.83	48
Openness subindex	5.00	26	Openness subindex	5.00	26
% of population born abroad	5.96	9	Exports per capita, dollars	4.12	40
Environmental policy subindex	4.81	34	Environmental policy subindex	4.81	34
			Carbon emission per 1000 sq. miles	4.32	40

MASSACHUSETTS

Index Overall Rank

7.75 1

2018

BHI

State Index

COMPETITIVE ADVANTAGES			COMPETITIVE DISADVANTAGES		
<i>Subindex/Variable</i>	<i>Index</i>	<i>Rank</i>	<i>Subindex/Variable</i>	<i>Index</i>	<i>Rank</i>
Government and fiscal policy subindex			Government and fiscal policy subindex		
Workers' compensation premium rates	5.68	13	State and local taxes per capita /income per capita	4.41	39
Bond rating: composite	5.52	11	Average weekly payment to insured unemployed	2.41	50
Budget deficit, % of GSP	5.87	7			
Full-time-equivalent state and local government employees per 100 residents	5.50	18			
Security subindex			Security subindex		
Crime index change 2012-2013, %	5.62	10	The BGA Integrity Index	4.40	38
Murder index, per 100,000 inhabitants	6.04	9			
Infrastructure subindex			Infrastructure subindex		
High-speed lines per 1000	5.12	14	Quality of Roads	4.15	42
Air passengers per capita	5.21	16	Average travel time to work	3.63	47
			Electricity Prices per kWh	3.32	47
			Average rent of 2 bedroom apartment	3.80	43
Human resources subindex			Human resources subindex		
% of population without health insurance	6.76	1			
Unemployment rate, not seasonally adjusted	5.74	12			
% of population enrolled in degree-granting institutions	5.87	8			
% of adults who are in the labor force	6.06	10			
Infant mortality rate, deaths per 1000 live births	6.90	1			
Rate of active physicians per 100,000 inhabitants	8.24	1			
% of students at or above proficient in mathematics, grade 4 - public schools	6.99	1			
Technology subindex			Technology subindex		
Academic Science and Engineering R&D per \$1,000 GSP	7.35	2			
NIH support to institutions per capita	9.96	1			
Patents per 100,000 inhabitants	4.88	18			
Science & Engineering grad. students 100,000 inhabitants	9.26	1			
S&E degrees awarded per 100,000 inhabitants	5.83	10			
Scientists and engineers as % of labor force	6.90	5			
Employment in high-tech industry as % of total employment	7.42	1			
Business incubation subindex			Business incubation subindex		
Total deposits (Commercial banks and Savings institutions) per capita	5.02	6	% of labor force that is represented by unions	4.35	36
Venture capital per capita	8.85	2	Minimum wage	3.19	48
Employer firm births per 100,000 inhabitants	6.38	5	Cost of Labor Adjusted for Educ. Attainment	2.77	50
IPO volume, in \$ per capita	9.09	1			
Pacific Research Institute Tort Index	5.42	17			
Openness subindex			Openness subindex		
Exports per capita, dollars	5.22	19			
Incoming foreign direct investment per capita, dollars	6.24	7			
% of population born abroad	6.18	8			
Environmental policy subindex			Environmental policy subindex		
Toxic release inventory, pounds per sq. miles	5.76	12	Carbon emission per 1000 sq. miles	4.75	35
			Air Quality Index	3.60	49

MICHIGAN

Index Overall Rank
5.39 15



2018					
COMPETITIVE ADVANTAGES			COMPETITIVE DISADVANTAGES		
Subindex/Variable	Index	Rank	Subindex/Variable	Index	Rank
Government and fiscal policy subindex	5.92	1	Government and fiscal policy subindex	5.92	1
State and local taxes per capita /income per capita	8.50	1			
Workers' compensation premium rates	5.66	14			
Average weekly payment to insured unemployed	5.52	16			
Full-time-equivalent state and local government employees per 100 residents	6.08	4			
Security subindex	4.43	42	Security subindex	4.43	42
			Crime index, per 100,000 inhabitants	4.47	38
			Crime index change 2012-2013, %	4.77	36
			Murder index, per 100,000 inhabitants	4.59	33
			The BGA Integrity Index	3.87	47
Infrastructure subindex	5.02	28	Infrastructure subindex	5.02	28
High-speed lines per 1000	5.44	10	Quality of Roads	4.76	33
			Electricity Prices per kWh	4.50	40
Human resources subindex	4.90	30	Human resources subindex	4.90	30
% of population without health insurance	5.91	8	Unemployment rate, not seasonally adjusted	4.63	34
% of population aged 25 and over that graduated from high school	5.50	16	% of adults who are in the labor force	4.44	37
Rate of active physicians per 100,000 inhabitants	5.29	15	Infant mortality rate, deaths per 1000 live births	4.26	38
			% of students at or above proficient in mathematics, grade 4 - public schools	4.44	33
Technology subindex	5.23	14	Technology subindex	5.23	14
Academic Science and Engineering R&D per \$1,000 GSP	5.97	7	S&E degrees awarded per 100,000 inhabitants	4.30	37
NIH support to institutions per capita	5.02	17			
Patents per 100,000 inhabitants	5.28	11			
Science & Engineering grad. students 100,000 inhabitants	5.53	13			
Scientists and engineers as % of labor force	6.05	6			
Employment in high-tech industry as % of total employment	5.28	18			
Business incubation subindex	4.43	47	Business incubation subindex	4.43	47
			Total deposits (Commercial banks and Savings institutions) per capita	4.71	36
			Employer firm births per 100,000 inhabitants	3.70	46
			% of labor force that is represented by unions	4.18	40
			Minimum wage	4.46	35
			Pacific Research Institute Tort Index	4.06	43
Openness subindex	5.67	9	Openness subindex	5.67	9
Exports per capita, dollars	6.58	4			
Incoming foreign direct investment per capita, dollars	5.84	13			
Environmental policy subindex	5.01	28	Environmental policy subindex	5.01	28
			Air Quality Index	4.54	35

MINNESOTA

Index Overall Rank
6.03 7

BHI

State Index

2018					
COMPETITIVE ADVANTAGES			COMPETITIVE DISADVANTAGES		
Subindex/Variable	Index	Rank	Subindex/Variable	Index	Rank
Government and fiscal policy subindex	4.87	34	Government and fiscal policy subindex	4.87	34
Bond rating: composite	5.77	10	State and local taxes per capita /income per capita	4.03	43
Budget deficit, % of GSP	5.27	19	Average weekly payment to insured unemployed	3.52	48
Full-time-equivalent state and local government employees per 100 residents	5.53	15			
Security subindex	5.44	12	Security subindex	5.44	12
Crime index, per 100,000 inhabitants	5.92	10			
Murder index, per 100,000 inhabitants	6.08	7			
Infrastructure subindex	5.16	20	Infrastructure subindex	5.16	20
Quality of Roads	5.46	20	Electricity Prices per kWh	4.97	36
Air passengers per capita	5.38	11			
Average travel time to work	5.24	17			
Human resources subindex	6.23	3	Human resources subindex	6.23	3
% of population without health insurance	6.24	5			
% of population aged 25 and over that graduated from high school	6.38	3			
Unemployment rate, not seasonally adjusted	5.98	9			
% of population enrolled in degree-granting institutions	6.02	7			
% of adults who are in the labor force	6.69	1			
Infant mortality rate, deaths per 1000 live births	5.96	12			
Rate of active physicians per 100,000 inhabitants	5.57	13			
% of students at or above proficient in mathematics, grade 4 - public schools	6.99	1			
Technology subindex	4.87	27	Technology subindex	4.87	27
NIH support to institutions per capita	5.36	10	Academic Science and Engineering R&D per \$1,000 GSP	4.23	42
Patents per 100,000 inhabitants	5.44	9	Science & Engineering grad. students 100,000 inhabitants	4.30	41
Scientists and engineers as % of labor force	5.67	9	S&E degrees awarded per 100,000 inhabitants	4.47	35
Employment in high-tech industry as % of total employment	5.44	14			
Business incubation subindex	4.57	42	Business incubation subindex	4.57	42
Total deposits (Commercial banks and Savings institutions) per capita	4.93	7	Employer firm births per 100,000 inhabitants	4.04	42
Venture capital per capita	4.90	12	% of labor force that is represented by unions	4.06	43
IPO volume, in \$ per capita	5.44	12	Minimum wage	4.17	36
			Cost of Labor Adjusted for Educ. Attainment	4.02	41
Openness subindex	5.23	20	Openness subindex	5.23	20
Exports per capita, dollars	6.30	7	Incoming foreign direct investment per capita, dollars	4.54	32
Environmental policy subindex	5.60	10	Environmental policy subindex	5.60	10
Toxic release inventory, pounds per sq. miles	5.73	15			
Carbon emission per 1000 sq. miles	5.67	17			
Air Quality Index	5.40	15			

MISSISSIPPI

Index Overall Rank

3.82 44

2018



COMPETITIVE ADVANTAGES			COMPETITIVE DISADVANTAGES		
<i>Subindex/Variable</i>	<i>Index</i>	<i>Rank</i>	<i>Subindex/Variable</i>	<i>Index</i>	<i>Rank</i>
Government and fiscal policy subindex			Government and fiscal policy subindex		
	5.14	18		5.14	18
State and local taxes per capita /income per capita	5.48	12	Full-time-equivalent state and local government employees	3.85	47
Workers' compensation premium rates	5.34	20			
Average weekly payment to insured unemployed	6.74	1			
Security subindex			Security subindex		
	5.43	13		5.43	13
Crime index, per 100,000 inhabitants	5.83	13	Murder index, per 100,000 inhabitants	4.51	35
The BGA Integrity Index	6.31	4			
Infrastructure subindex			Infrastructure subindex		
	4.93	31		4.93	31
Electricity Prices per kWh	5.56	14	Quality of Roads	4.41	39
Average rent of 2 bedroom apartment	6.02	5	High-speed lines per 1000	4.49	36
			Air passengers per capita	4.14	48
Human resources subindex			Human resources subindex		
	3.56	50		3.56	50
			% of population without health insurance	3.72	45
			% of population aged 25 and over that graduated from high school	3.33	47
			Unemployment rate, not seasonally adjusted	3.78	45
			% of adults who are in the labor force	2.99	49
			Infant mortality rate, deaths per 1000 live births	2.73	50
			Rate of active physicians per 100,000 inhabitants	3.55	50
			% of students at or above proficient in mathematics, grade 4 - public schools	3.69	45
Technology subindex			Technology subindex		
	4.61	35		4.61	35
Academic Science and Engineering R&D per \$1,000 GSP	5.34	14	NIH support to institutions per capita	4.16	48
S&E degrees awarded per 100,000 inhabitants	5.68	12	Patents per 100,000 inhabitants	4.32	46
			Science & Engineering grad. students 100,000 inhabitants	4.42	37
			Scientists and engineers as % of labor force	3.33	50
			Employment in high-tech industry as % of total employment	3.70	49
Business incubation subindex			Business incubation subindex		
	5.08	19		5.08	19
% of labor force that is represented by unions	5.80	14	Total deposits (Commercial banks and Savings institutions) per capita	4.68	45
Minimum wage	5.92	1	Venture capital per capita	4.56	50
Cost of Labor Adjusted for Educ. Attainment	6.48	3	Employer firm births per 100,000 inhabitants	3.55	48
Openness subindex			Openness subindex		
	4.07	47		4.07	47
			Exports per capita, dollars	4.17	39
			Incoming foreign direct investment per capita, dollars	4.16	39
			% of population born abroad	3.87	48
Environmental policy subindex			Environmental policy subindex		
	5.04	26		5.04	26
Air Quality Index	5.14	17	Toxic release inventory, pounds per sq. miles	4.65	36

State Index

MISSOURI

Index **Overall Rank**
4.49 **35**

BHI

2018					
COMPETITIVE ADVANTAGES			COMPETITIVE DISADVANTAGES		
<i>Subindex/Variable</i>	<i>Index</i>	<i>Rank</i>	<i>Subindex/Variable</i>	<i>Index</i>	<i>Rank</i>
Government and fiscal policy subindex	5.21	14	Government and fiscal policy subindex	5.21	14
Budget deficit, % of GSP	5.27	19	Full-time-equivalent state and local government	5.07	31
Average weekly payment to insured unemployed	6.01	11			
Security subindex	4.08	49	Security subindex	4.08	49
			Crime index, per 100,000 inhabitants	4.14	43
			Crime index change 2012-2013, %	4.56	38
			Murder index, per 100,000 inhabitants	2.78	49
Infrastructure subindex	5.10	25	Infrastructure subindex	5.10	25
High-speed lines per 1000	4.91	19	Quality of Roads	4.58	36
Air passengers per capita	4.95	20	Electricity Prices per kWh	5.17	32
Average travel time to work	5.21	19			
Average rent of 2 bedroom apartment	5.75	13			
Human resources subindex	5.11	25	Human resources subindex	5.11	25
Unemployment rate, not seasonally adjusted	5.74	12	% of population without health insurance	4.60	33
% of population enrolled in degree-granting institutions	5.26	16	Infant mortality rate, deaths per 1000 live births	4.77	31
Technology subindex	5.12	18	Technology subindex	5.12	18
NIH support to institutions per capita	5.34	11			
Patents per 100,000 inhabitants	5.30	10			
Science & Engineering grad. students 100,000 inhabitants	5.61	11			
Business incubation subindex	5.04	25	Business incubation subindex	5.04	25
Total deposits (Commercial banks and Savings institutions) per capita	4.79	18	Pacific Research Institute Tort Index	4.01	45
Employer firm births per 100,000 inhabitants	6.23	8			
Cost of Labor Adjusted for Educ. Attainment	5.59	19			
Openness subindex	4.35	41	Openness subindex	4.35	41
			Exports per capita, dollars	4.33	35
			Incoming foreign direct investment per capita, dollars	4.56	31
			% of population born abroad	4.16	40
Environmental policy subindex	5.05	25	Environmental policy subindex	5.05	25
Air Quality Index	5.14	18	Toxic release inventory, pounds per sq. miles	4.91	33

State Index

COMPETITIVE ADVANTAGES			COMPETITIVE DISADVANTAGES		
Subindex/Variable	Index	Rank	Subindex/Variable	Index	Rank
Government and fiscal policy subindex	4.81	38	Government and fiscal policy subindex	4.81	38
State and local taxes per capita /income per capita	5.56	11	Workers' compensation premium rates	4.41	38
Bond rating: composite	5.27	19	Budget deficit, % of GSP	4.06	43
			Full-time-equivalent state and local government employees per 100 residents	4.45	38
Security subindex	5.29	20	Security subindex	5.29	20
Crime index change 2012-2013, %	5.45	14			
Murder index, per 100,000 inhabitants	5.54	20			
The BGA Integrity Index	5.23	15			
Infrastructure subindex	5.49	4	Infrastructure subindex	5.49	4
Quality of Roads	5.72	12	High-speed lines per 1000	4.27	45
Average travel time to work	6.66	4			
Electricity Prices per kWh	5.49	18			
Average rent of 2 bedroom apartment	5.94	7			
Human resources subindex	5.07	26	Human resources subindex	5.07	26
% of population aged 25 and over that graduated from high school	6.57	1	% of population enrolled in degree-granting institutions	3.96	45
Infant mortality rate, deaths per 1000 live births	5.45	16	Rate of active physicians per 100,000 inhabitants	4.56	31
Technology subindex	4.82	29	Technology subindex	4.82	29
Academic Science and Engineering R&D per \$1,000 GSP	5.70	9	Patents per 100,000 inhabitants	4.36	38
S&E degrees awarded per 100,000 inhabitants	5.48	14	Science & Engineering grad. students 100,000 inhabitants	4.55	34
			Scientists and engineers as % of labor force	4.49	32
			Employment in high-tech industry as % of total employment	4.21	37
Business incubation subindex	4.99	28	Business incubation subindex	4.99	28
Employer firm births per 100,000 inhabitants	6.36	6	Total deposits (Commercial banks and Savings institutions) per capita	4.72	34
Cost of Labor Adjusted for Educ. Attainment	6.15	4	Venture capital per capita	4.67	31
			% of labor force that is represented by unions	4.45	34
			Pacific Research Institute Tort Index	4.06	43
Openness subindex	3.44	50	Openness subindex	3.44	50
			Exports per capita, dollars	3.78	47
			Incoming foreign direct investment per capita, dollars	2.69	50
			% of population born abroad	3.85	49
Environmental policy subindex	6.05	5	Environmental policy subindex	6.05	5
Toxic release inventory, pounds per sq. miles	5.78	11			
Carbon emission per 1000 sq. miles	6.01	7			
Air Quality Index	6.35	8			

NEBRASKA

Index Overall Rank

6.14 6

2018

BHI

COMPETITIVE ADVANTAGES			COMPETITIVE DISADVANTAGES		
<i>Subindex/Variable</i>	<i>Index</i>	<i>Rank</i>	<i>Subindex/Variable</i>	<i>Index</i>	<i>Rank</i>
Government and fiscal policy subindex	5.07	24	Government and fiscal policy subindex	5.07	24
Bond rating: composite	6.26	1	Full-time-equivalent state and local government employees	4.38	42
Security subindex	5.49	8	Security subindex	5.49	8
Crime index, per 100,000 inhabitants	5.51	18	Crime index change 2012-2013, %	4.42	43
Murder index, per 100,000 inhabitants	5.91	12			
The BGA Integrity Index	6.10	6			
Infrastructure subindex	5.45	7	Infrastructure subindex	5.45	7
Quality of Roads	5.89	8	High-speed lines per 1000	4.37	38
Average travel time to work	6.50	5			
Electricity Prices per kWh	5.62	11			
Average rent of 2 bedroom apartment	5.74	14			
Human resources subindex	5.58	9	Human resources subindex	5.58	9
Unemployment rate, not seasonally adjusted	6.11	6	Rate of active physicians per 100,000 inhabitants	4.42	35
% of population enrolled in degree-granting institutions	5.65	13			
% of adults who are in the labor force	6.56	3			
Infant mortality rate, deaths per 1000 live births	5.28	18			
% of students at or above proficient in mathematics, grade 4 - public schools	6.39	6			
Technology subindex	4.62	34	Technology subindex	4.62	34
Academic Science and Engineering R&D per \$1,000 GSP	5.32	15	Patents per 100,000 inhabitants	4.37	37
Science & Engineering grad. students 100,000 inhabitants	5.39	15	S&E degrees awarded per 100,000 inhabitants	3.19	49
Business incubation subindex	4.91	32	Business incubation subindex	4.91	32
Total deposits (Commercial banks and Savings institutions) per capita	4.84	15	Venture capital per capita	4.58	44
Employer firm births per 100,000 inhabitants	5.56	15	Minimum wage	4.65	34
% of labor force that is represented by unions	5.63	18	Pacific Research Institute Tort Index	4.61	33
Openness subindex	4.38	39	Openness subindex	4.38	39
			Incoming foreign direct investment per capita, dollars	4.07	41
Environmental policy subindex	6.10	4	Environmental policy subindex	6.10	4
Toxic release inventory, pounds per sq. miles	5.78	10			
Carbon emission per 1000 sq. miles	5.78	12			
Air Quality Index	6.74	5			

State Index

2018

COMPETITIVE ADVANTAGES			COMPETITIVE DISADVANTAGES		
<i>Subindex/Variable</i>	<i>Index</i>	<i>Rank</i>	<i>Subindex/Variable</i>	<i>Index</i>	<i>Rank</i>
Government and fiscal policy subindex	5.63	4	Government and fiscal policy subindex	5.63	4
State and local taxes per capita /income per capita	5.80	9	Average weekly payment to insured unemployed	4.79	31
Workers' compensation premium rates	6.05	8			
Budget deficit, % of GSP	5.87	7			
Full-time-equivalent state and local government employees per 100 residents	6.23	1			
Security subindex	4.23	46	Security subindex	4.23	46
Crime index change 2012-2013, %	5.82	5	Crime index, per 100,000 inhabitants	3.89	46
			Murder index, per 100,000 inhabitants	4.10	41
			The BGA Integrity Index	3.13	50
Infrastructure subindex	5.46	6	Infrastructure subindex	5.46	6
Quality of Roads	5.63	18	High-speed lines per 1000	4.52	33
Air passengers per capita	7.51	2	Average rent of 2 bedroom apartment	4.55	35
Electricity Prices per kWh	5.53	17			
Human resources subindex	4.10	47	Human resources subindex	4.10	47
			% of population without health insurance	4.01	44
			% of population aged 25 and over that graduated from high school	3.90	43
			Unemployment rate, not seasonally adjusted	4.14	42
			% of population enrolled in degree-granting institutions	3.23	49
			Rate of active physicians per 100,000 inhabitants	3.95	46
			% of students at or above proficient in mathematics, grade 4 - public schools	3.69	45
Technology subindex	4.03	49	Technology subindex	4.03	49
S&E degrees awarded per 100,000 inhabitants	4.97	20	Academic Science and Engineering R&D per \$1,000 GSP	3.23	50
			NIH support to institutions per capita	4.08	49
			Science & Engineering grad. students 100,000 inhabitants	3.30	50
			Scientists and engineers as % of labor force	3.40	48
			Employment in high-tech industry as % of total employment	3.86	46
Business incubation subindex	4.97	30	Business incubation subindex	4.97	30
Total deposits (Commercial banks and Savings institutions) per capita	5.23	5	% of labor force that is represented by unions	4.12	41
Employer firm births per 100,000 inhabitants	5.60	12	Pacific Research Institute Tort Index	4.36	40
IPO volume, in \$ per capita	4.95	18			
Cost of Labor Adjusted for Educ. Attainment	5.60	18			
Openness subindex	5.86	7	Openness subindex	5.86	7
Exports per capita, dollars	6.52	5	Incoming foreign direct investment per capita, dollars	4.42	35
% of population born abroad	6.66	5			
Environmental policy subindex	4.39	39	Environmental policy subindex	4.39	39
Carbon emission per 1000 sq. miles	5.99	8	Toxic release inventory, pounds per sq. miles	2.65	48
			Air Quality Index	4.51	37

NEW HAMPSHIRE

Index **Overall Rank**

5.38

16

2018

COMPETITIVE ADVANTAGES			COMPETITIVE DISADVANTAGES		
<i>Subindex/Variable</i>	<i>Index</i>	<i>Rank</i>	<i>Subindex/Variable</i>	<i>Index</i>	<i>Rank</i>
Government and fiscal policy subindex	5.21	13	Government and fiscal policy subindex	5.21	13
State and local taxes per capita /income per capita	5.95	8	Budget deficit, % of GSP	4.36	37
Bond rating: composite	5.27	19			
Full-time-equivalent state and local government employees per 100 residents	5.54	14			
Security subindex	4.81	29	Security subindex	4.81	29
Crime index, per 100,000 inhabitants	6.22	3	Crime index change 2012-2013, %	1.75	49
Murder index, per 100,000 inhabitants	6.24	2			
The BGA Integrity Index	5.02	19			
Infrastructure subindex	4.28	45	Infrastructure subindex	4.28	45
			Quality of Roads	4.67	35
			High-speed lines per 1000	4.31	42
			Air passengers per capita	4.32	43
			Average travel time to work	4.25	39
			Electricity Prices per kWh	3.67	45
			Average rent of 2 bedroom apartment	4.45	36
Human resources subindex	6.42	2	Human resources subindex	6.42	2
% of population without health insurance	5.81	14			
% of population aged 25 and over that graduated from high school	6.26	6			
Unemployment rate, not seasonally adjusted	6.60	1			
% of population enrolled in degree-granting institutions	7.78	2			
% of adults who are in the labor force	6.39	6			
Infant mortality rate, deaths per 1000 live births	6.47	3			
Rate of active physicians per 100,000 inhabitants	5.80	9			
% of students at or above proficient in mathematics, grade 4 - public schools	6.24	7			
Technology subindex	5.22	15	Technology subindex	5.22	15
Academic Science and Engineering R&D per \$1,000 GSP	6.22	4	Patents per 100,000 inhabitants	4.38	35
NIH support to institutions per capita	5.06	16			
Scientists and engineers as % of labor force	5.63	10			
Employment in high-tech industry as % of total employment	6.15	9			
Business incubation subindex	5.04	23	Business incubation subindex	5.04	23
Venture capital per capita	4.78	20	Cost of Labor Adjusted for Educ. Attainment	4.03	40
Employer firm births per 100,000 inhabitants	6.01	9			
IPO volume, in \$ per capita	4.81	20			
Minimum wage	5.92	1			
Openness subindex	4.93	27	Openness subindex	4.93	27
Incoming foreign direct investment per capita, dollars	6.64	2	Exports per capita, dollars	3.68	48
Environmental policy subindex	4.91	31	Environmental policy subindex	4.91	31
Toxic release inventory, pounds per sq. miles	6.02	1	Air Quality Index	2.89	50
Carbon emission per 1000 sq. miles	5.84	10			

BHI

State Index

2018

COMPETITIVE ADVANTAGES			COMPETITIVE DISADVANTAGES		
<i>Subindex/Variable</i>	<i>Index</i>	<i>Rank</i>	<i>Subindex/Variable</i>	<i>Index</i>	<i>Rank</i>
Government and fiscal policy subindex 3.72 50			Government and fiscal policy subindex 3.72 50		
Budget deficit, % of GSP	5.57	12	State and local taxes per capita /income per capita	3.15	48
			Workers' compensation premium rates	2.77	48
			Bond rating: composite	2.20	49
			Average weekly payment to insured unemployed	3.55	47
Security subindex 5.42 15			Security subindex 5.42 15		
Crime index, per 100,000 inhabitants	6.00	6			
Murder index, per 100,000 inhabitants	5.54	20			
Infrastructure subindex 4.05 49			Infrastructure subindex 4.05 49		
High-speed lines per 1000	5.39	11	Quality of Roads	2.67	49
Air passengers per capita	5.10	19	Average travel time to work	3.12	48
			Electricity Prices per kWh	4.60	39
			Average rent of 2 bedroom apartment	3.43	47
Human resources subindex 5.26 18			Human resources subindex 5.26 18		
Infant mortality rate, deaths per 1000 live births	6.22	6	Unemployment rate, not seasonally adjusted	4.76	32
Rate of active physicians per 100,000 inhabitants	5.64	11	% of population enrolled in degree-granting institutions	3.84	47
% of students at or above proficient in mathematics, grade 4 - public schools	6.54	4	% of adults who are in the labor force	4.71	31
Technology subindex 4.91 26			Technology subindex 4.91 26		
Patents per 100,000 inhabitants	6.00	7	Academic Science and Engineering R&D per \$1,000 GSP	3.77	48
S&E degrees awarded per 100,000 inhabitants	4.99	19	NIH support to institutions per capita	4.34	39
Scientists and engineers as % of labor force	5.54	11			
Employment in high-tech industry as % of total employment	5.64	10			
Business incubation subindex 4.45 45			Business incubation subindex 4.45 45		
Total deposits (Commercial banks and Savings institutions) per capita	4.87	10	% of labor force that is represented by unions	4.02	44
Employer firm births per 100,000 inhabitants	5.57	14	Minimum wage	4.94	31
IPO volume, in \$ per capita	6.03	8	Pacific Research Institute Tort Index	2.56	50
			Cost of Labor Adjusted for Educ. Attainment	2.80	49
Openness subindex 6.28 2			Openness subindex 6.28 2		
Incoming foreign direct investment per capita, dollars	6.83	1			
% of population born abroad	7.11	3			
Environmental policy subindex 4.04 45			Environmental policy subindex 4.04 45		
			Toxic release inventory, pounds per sq. miles	4.62	37
			Carbon emission per 1000 sq. miles	2.86	48

NEW MEXICO

Index **Overall Rank**
3.74 **46**

2018

BHI

COMPETITIVE ADVANTAGES			COMPETITIVE DISADVANTAGES		
<i>Subindex/Variable</i>	<i>Index</i>	<i>Rank</i>	<i>Subindex/Variable</i>	<i>Index</i>	<i>Rank</i>
Government and fiscal policy subindex	5.22	12	Government and fiscal policy subindex	5.22	12
State and local taxes per capita /income per capita	5.41	15	Full-time-equivalent state and local government employees	4.22	43
Workers' compensation premium rates	5.42	17			
Bond rating: composite	5.52	11			
Budget deficit, % of GSP	5.57	12			
Average weekly payment to insured unemployed	5.21	20			
Security subindex	3.79	50	Security subindex	3.79	50
The BGA Integrity Index	5.83	8	Crime index, per 100,000 inhabitants	1.89	49
			Crime index change 2012-2013, %	3.86	48
			Murder index, per 100,000 inhabitants	3.56	47
Infrastructure subindex	4.92	34	Infrastructure subindex	4.92	34
Average travel time to work	5.60	14	Quality of Roads	4.15	42
Average rent of 2 bedroom apartment	5.68	16	High-speed lines per 1000	4.38	37
			Air passengers per capita	4.57	31
			Electricity Prices per kWh	5.14	33
Human resources subindex	4.07	48	Human resources subindex	4.07	48
% of population enrolled in degree-granting institutions	5.17	17	% of population without health insurance	4.57	35
			% of population aged 25 and over that graduated from high school	3.33	47
			Unemployment rate, not seasonally adjusted	3.41	48
			% of adults who are in the labor force	3.41	48
			Rate of active physicians per 100,000 inhabitants	4.52	32
			% of students at or above proficient in mathematics, grade 4 - public schools	3.09	49
Technology subindex	5.20	16	Technology subindex	5.20	16
Academic Science and Engineering R&D per \$1,000 GSP	5.07	20	Patents per 100,000 inhabitants	4.31	47
S&E degrees awarded per 100,000 inhabitants	5.98	4			
Employment in high-tech industry as % of total employment	6.25	8			
Business incubation subindex	5.07	22	Business incubation subindex	5.07	22
% of labor force that is represented by unions	5.59	19	Total deposits (Commercial banks and Savings institutions) per capita	4.65	49
Cost of Labor Adjusted for Educ. Attainment	6.61	1	Employer firm births per 100,000 inhabitants	4.50	32
			Pacific Research Institute Tort Index	4.40	38
Openness subindex	4.14	43	Openness subindex	4.14	43
% of population born abroad	5.06	19	Exports per capita, dollars	3.90	45
			Incoming foreign direct investment per capita, dollars	3.45	49
Environmental policy subindex	5.56	12	Environmental policy subindex	5.56	12
Toxic release inventory, pounds per sq. miles	5.86	4			
Carbon emission per 1000 sq. miles	5.89	9			

State Index

NEW YORK

Index Overall Rank

2018

5.02

25



COMPETITIVE ADVANTAGES			COMPETITIVE DISADVANTAGES		
<i>Subindex/Variable</i>	<i>Index</i>	<i>Rank</i>	<i>Subindex/Variable</i>	<i>Index</i>	<i>Rank</i>
Government and fiscal policy subindex <i>4.46</i> 45			Government and fiscal policy subindex <i>4.46</i> 45		
Bond rating: composite	5.52	11	State and local taxes per capita /income per capita	2.83	50
Budget deficit, % of GSP	7.07	2	Workers' compensation premium rates	2.30	50
			Full-time-equivalent state and local government employees per 100 residents	4.11	45
Security subindex <i>5.23</i> 21			Security subindex <i>5.23</i> 21		
Murder index, per 100,000 inhabitants	5.67	17	Crime index change 2012-2013, %	4.50	40
The BGA Integrity Index	5.67	9			
Infrastructure subindex <i>4.48</i> 43			Infrastructure subindex <i>4.48</i> 43		
High-speed lines per 1000	6.99	4	Quality of Roads	4.58	36
Air passengers per capita	5.15	17	Average travel time to work	2.70	50
			Electricity Prices per kWh	3.75	44
			Average rent of 2 bedroom apartment	3.71	45
Human resources subindex <i>5.18</i> 20			Human resources subindex <i>5.18</i> 20		
% of population without health insurance	5.91	8	% of population aged 25 and over that graduated from high school	3.97	42
% of population enrolled in degree-granting institutions	5.15	18	Unemployment rate, not seasonally adjusted	4.76	32
Infant mortality rate, deaths per 1000 live births	6.13	9	% of adults who are in the labor force	4.36	40
Rate of active physicians per 100,000 inhabitants	6.89	3	% of students at or above proficient in mathematics, grade 4 - public schools	4.29	36
Technology subindex <i>5.36</i> 9			Technology subindex <i>5.36</i> 9		
Academic Science and Engineering R&D per \$1,000 GSP	5.08	19			
NIH support to institutions per capita	5.86	8			
Patents per 100,000 inhabitants	5.01	15			
Science & Engineering grad. students 100,000 inhabitants	6.29	5			
S&E degrees awarded per 100,000 inhabitants	5.05	18			
Business incubation subindex <i>4.72</i> 39			Business incubation subindex <i>4.72</i> 39		
Total deposits (Commercial banks and Savings institutions) per capita	5.37	4	% of labor force that is represented by unions	2.48	49
Venture capital per capita	6.60	3	Minimum wage	3.62	44
IPO volume, in \$ per capita	7.87	2	Pacific Research Institute Tort Index	2.85	49
			Cost of Labor Adjusted for Educ. Attainment	3.88	43
Openness subindex <i>6.38</i> 1			Openness subindex <i>6.38</i> 1		
Exports per capita, dollars	6.51	6			
Incoming foreign direct investment per capita, dollars	5.46	19			
% of population born abroad	7.18	2			
Environmental policy subindex <i>5.09</i> 22			Environmental policy subindex <i>5.09</i> 22		
Toxic release inventory, pounds per sq. miles	5.75	13	Air Quality Index	4.11	44

State Index

NORTH CAROLINA

Index **Overall Rank**

5.91

11

2018

BHI

State Index

COMPETITIVE ADVANTAGES			COMPETITIVE DISADVANTAGES		
<i>Subindex/Variable</i>	<i>Index</i>	<i>Rank</i>	<i>Subindex/Variable</i>	<i>Index</i>	<i>Rank</i>
Government and fiscal policy subindex			Government and fiscal policy subindex		
Average weekly payment to insured unemployed	6.09	9	State and local taxes per capita /income per capita	4.74	31
			Workers' compensation premium rates	4.75	32
			Budget deficit, % of GSP	3.16	48
Security subindex			Security subindex		
The BGA Integrity Index	5.16	18	Crime index change 2012-2013, %	4.62	37
			Murder index, per 100,000 inhabitants	4.39	36
Infrastructure subindex			Infrastructure subindex		
Quality of Roads	5.81	10			
High-speed lines per 1000	5.44	9			
Air passengers per capita	5.24	14			
Electricity Prices per kWh	5.63	10			
Human resources subindex			Human resources subindex		
% of students at or above proficient in mathematics, grade 4 - public schools	5.34	15	% of population without health insurance	4.18	42
			% of population aged 25 and over that graduated from high school	4.39	36
			% of population enrolled in degree-granting institutions	4.43	37
			% of adults who are in the labor force	4.44	37
			Infant mortality rate, deaths per 1000 live births	4.01	40
Technology subindex			Technology subindex		
Academic Science and Engineering R&D per \$1,000 GSP	6.29	3			
NIH support to institutions per capita	5.87	7			
Patents per 100,000 inhabitants	8.08	1			
S&E degrees awarded per 100,000 inhabitants	5.86	8			
Scientists and engineers as % of labor force	5.27	16			
Employment in high-tech industry as % of total employment	5.13	20			
Business incubation subindex			Business incubation subindex		
Total deposits (Commercial banks and Savings institutions) per capita	4.86	13			
Venture capital per capita	5.28	7			
% of labor force that is represented by unions	6.41	2			
Minimum wage	5.92	1			
Pacific Research Institute Tort Index	6.92	3			
Cost of Labor Adjusted for Educ. Attainment	5.75	15			
Openness subindex			Openness subindex		
Incoming foreign direct investment per capita, dollars	6.04	10			
Environmental policy subindex			Environmental policy subindex		
			Toxic release inventory, pounds per sq. miles	4.82	34
			Carbon emission per 1000 sq. miles	4.97	31

NORTH DAKOTA

Index **Overall Rank**

5.85

12

2018



COMPETITIVE ADVANTAGES			COMPETITIVE DISADVANTAGES		
<i>Subindex/Variable</i>	<i>Index</i>	<i>Rank</i>	<i>Subindex/Variable</i>	<i>Index</i>	<i>Rank</i>
Government and fiscal policy subindex			Government and fiscal policy subindex		
State and local taxes per capita /income per capita	5.21	19	Average weekly payment to insured unemployed	3.62	45
Workers' compensation premium rates	6.76	1	Full-time-equivalent state and local government employees per 100 residents	4.15	44
Bond rating: composite	5.52	11			
Budget deficit, % of GSP	5.27	19			
Security subindex			Security subindex		
Crime index, per 100,000 inhabitants	5.54	17	Crime index change 2012-2013, %	0.89	50
Murder index, per 100,000 inhabitants	5.87	15			
The BGA Integrity Index	5.86	7			
Infrastructure subindex			Infrastructure subindex		
Quality of Roads	6.16	4	High-speed lines per 1000	4.23	47
Average travel time to work	6.89	2			
Average rent of 2 bedroom apartment	5.82	11			
Human resources subindex			Human resources subindex		
% of population aged 25 and over that graduated from high school	5.96	9	Rate of active physicians per 100,000 inhabitants	4.39	36
Unemployment rate, not seasonally adjusted	6.35	3			
% of population enrolled in degree-granting institutions	5.72	11			
% of adults who are in the labor force	6.66	2			
Infant mortality rate, deaths per 1000 live births	6.39	5			
% of students at or above proficient in mathematics, grade 4 - public schools	5.94	10			
Technology subindex			Technology subindex		
Academic Science and Engineering R&D per \$1,000 GSP	5.76	8	NIH support to institutions per capita	4.32	41
Science & Engineering grad. students 100,000 inhabitants	6.30	4	Patents per 100,000 inhabitants	4.30	50
S&E degrees awarded per 100,000 inhabitants	5.46	15	Scientists and engineers as % of labor force	4.25	38
			Employment in high-tech industry as % of total employment	4.26	35
Business incubation subindex			Business incubation subindex		
Total deposits (Commercial banks and Savings institutions) per capita	4.87	12	Venture capital per capita	4.62	34
% of labor force that is represented by unions	5.88	12	Cost of Labor Adjusted for Educ. Attainment	4.10	38
Minimum wage	5.92	1			
Pacific Research Institute Tort Index	6.59	5			
Openness subindex			Openness subindex		
Exports per capita, dollars	6.09	9	Incoming foreign direct investment per capita, dollars	3.86	44
			% of population born abroad	4.13	42
Environmental policy subindex			Environmental policy subindex		
Carbon emission per 1000 sq. miles	5.62	18	Air Quality Index	3.86	45

2018					
COMPETITIVE ADVANTAGES			COMPETITIVE DISADVANTAGES		
Subindex/Variable	Index	Rank	Subindex/Variable	Index	Rank
Government and fiscal policy subindex	5.13	20	Government and fiscal policy subindex	5.13	20
Workers' compensation premium rates	5.62	15	State and local taxes per capita /income per capita	4.71	32
Bond rating: composite	5.52	11	Average weekly payment to insured unemployed	4.56	35
Full-time-equivalent state and local government employees per 100 residents	5.70	11			
Security subindex	5.18	23	Security subindex	5.18	23
Crime index, per 100,000 inhabitants	5.54	16	The BGA Integrity Index	4.56	33
Crime index change 2012-2013, %	5.75	6			
Infrastructure subindex	5.29	16	Infrastructure subindex	5.29	16
High-speed lines per 1000	5.66	7	Air passengers per capita	4.37	41
Average travel time to work	5.24	17			
Average rent of 2 bedroom apartment	5.88	9			
Human resources subindex	4.72	32	Human resources subindex	4.72	32
% of population without health insurance	5.55	18	Unemployment rate, not seasonally adjusted	3.90	44
			% of population enrolled in degree-granting institutions	4.57	34
			% of adults who are in the labor force	4.61	35
			Infant mortality rate, deaths per 1000 live births	3.92	42
Technology subindex	4.86	28	Technology subindex	4.86	28
Patents per 100,000 inhabitants	5.18	13	S&E degrees awarded per 100,000 inhabitants	4.52	33
Science & Engineering grad. students 100,000 inhabitants	5.29	16	Employment in high-tech industry as % of total employment	4.42	33
Scientists and engineers as % of labor force	5.11	20			
Business incubation subindex	4.79	37	Business incubation subindex	4.79	37
Total deposits (Commercial banks and Savings institutions) per capita	4.79	20	Employer firm births per 100,000 inhabitants	3.43	50
Venture capital per capita	4.80	17	% of labor force that is represented by unions	4.39	35
IPO volume, in \$ per capita	5.27	14			
Pacific Research Institute Tort Index	5.43	15			
Openness subindex	5.03	23	Openness subindex	5.03	23
Exports per capita, dollars	5.63	13	% of population born abroad	4.23	39
Environmental policy subindex	4.02	46	Environmental policy subindex	4.02	46
Air Quality Index	4.99	20	Toxic release inventory, pounds per sq. miles	3.50	46
			Carbon emission per 1000 sq. miles	3.57	45

2018

COMPETITIVE ADVANTAGES			COMPETITIVE DISADVANTAGES		
<i>Subindex/Variable</i>	<i>Index</i>	<i>Rank</i>	<i>Subindex/Variable</i>	<i>Index</i>	<i>Rank</i>
Government and fiscal policy subindex 4.82 36			Government and fiscal policy subindex 4.82 36		
State and local taxes per capita /income per capita	5.46	13	Budget deficit, % of GSP	3.46	46
			Average weekly payment to insured unemployed	4.68	32
Security subindex 4.90 27			Security subindex 4.90 27		
Crime index change 2012-2013, %	5.34	17	Crime index, per 100,000 inhabitants	4.36	39
The BGA Integrity Index	5.19	16	Murder index, per 100,000 inhabitants	4.72	31
Infrastructure subindex 4.97 30			Infrastructure subindex 4.97 30		
Average travel time to work	5.70	10	Quality of Roads	3.54	46
Electricity Prices per kWh	5.76	7	Air passengers per capita	4.39	40
Average rent of 2 bedroom apartment	5.84	10			
Human resources subindex 4.40 40			Human resources subindex 4.40 40		
Unemployment rate, not seasonally adjusted	5.74	12	% of population without health insurance	3.03	49
Rate of active physicians per 100,000 inhabitants	5.39	14	% of population aged 25 and over that graduated from high school	4.47	34
			% of population enrolled in degree-granting institutions	4.31	39
			% of adults who are in the labor force	4.51	36
			Infant mortality rate, deaths per 1000 live births	3.50	47
			% of students at or above proficient in mathematics, grade 4 - public schools	4.29	36
Technology subindex 4.32 42			Technology subindex 4.32 42		
			Academic Science and Engineering R&D per \$1,000 GSP	4.20	43
			NIH support to institutions per capita	4.27	44
			Patents per 100,000 inhabitants	4.40	33
			Science & Engineering grad. students 100,000 inhabitants	4.60	31
			S&E degrees awarded per 100,000 inhabitants	4.52	32
			Scientists and engineers as % of labor force	4.23	40
			Employment in high-tech industry as % of total employment	3.96	42
Business incubation subindex 5.11 18			Business incubation subindex 5.11 18		
IPO volume, in \$ per capita	5.07	16	Total deposits (Commercial banks and Savings institutions) per capita	4.72	33
% of labor force that is represented by unions	5.74	16	Venture capital per capita	4.59	43
Minimum wage	5.92	1	Employer firm births per 100,000 inhabitants	4.34	37
Cost of Labor Adjusted for Educ. Attainment	5.94	9	Pacific Research Institute Tort Index	4.55	35
Openness subindex 4.13 45			Openness subindex 4.13 45		
			Exports per capita, dollars	4.00	43
			Incoming foreign direct investment per capita, dollars	3.90	43
Environmental policy subindex 5.17 21			Environmental policy subindex 5.17 21		
Toxic release inventory, pounds per sq. miles	5.55	18			

2018

COMPETITIVE ADVANTAGES			COMPETITIVE DISADVANTAGES		
<i>Subindex/Variable</i>	<i>Index</i>	<i>Rank</i>	<i>Subindex/Variable</i>	<i>Index</i>	<i>Rank</i>
Government and fiscal policy subindex	5.09	21	Government and fiscal policy subindex	5.09	21
Workers' compensation premium rates	6.11	6	State and local taxes per capita /income per capita	4.35	41
Bond rating: composite	5.52	11	Average weekly payment to insured unemployed	4.27	40
Budget deficit, % of GSP	5.27	19	Full-time-equivalent state and local government employees per 100 residents	5.03	32
Security subindex	5.37	16	Security subindex	5.37	16
Crime index, per 100,000 inhabitants	5.51	19	The BGA Integrity Index	4.25	42
Crime index change 2012-2013, %	5.68	9			
Murder index, per 100,000 inhabitants	6.04	9			
Infrastructure subindex	5.16	22	Infrastructure subindex	5.16	22
Quality of Roads	5.89	8	Average rent of 2 bedroom apartment	4.41	37
Air passengers per capita	5.11	18			
Electricity Prices per kWh	5.69	9			
Human resources subindex	4.68	34	Human resources subindex	4.68	34
% of population without health insurance	5.35	20	Unemployment rate, not seasonally adjusted	4.27	39
Infant mortality rate, deaths per 1000 live births	5.45	16	% of population enrolled in degree-granting institutions	4.61	31
			% of adults who are in the labor force	4.69	33
			Rate of active physicians per 100,000 inhabitants	3.83	48
			% of students at or above proficient in mathematics, grade 4 - public schools	3.99	41
Technology subindex	5.07	20	Technology subindex	5.07	20
NIH support to institutions per capita	5.11	14			
S&E degrees awarded per 100,000 inhabitants	5.93	5			
Scientists and engineers as % of labor force	5.39	15			
Employment in high-tech industry as % of total employment	5.54	11			
Business incubation subindex	4.59	41	Business incubation subindex	4.59	41
Venture capital per capita	4.90	13	Total deposits (Commercial banks and Savings institutions) per capita	4.68	42
Employer firm births per 100,000 inhabitants	5.47	18	% of labor force that is represented by unions	4.31	37
			Minimum wage	3.37	47
			Pacific Research Institute Tort Index	4.59	34
Openness subindex	4.45	38	Openness subindex	4.45	38
% of population born abroad	5.11	17	Exports per capita, dollars	4.11	41
			Incoming foreign direct investment per capita, dollars	4.13	40
Environmental policy subindex	6.33	1	Environmental policy subindex	6.33	1
Toxic release inventory, pounds per sq. miles	5.85	5			
Carbon emission per 1000 sq. miles	6.03	6			
Air Quality Index	7.11	3			

2018

COMPETITIVE ADVANTAGES			COMPETITIVE DISADVANTAGES		
<i>Subindex/Variable</i>	<i>Index</i>	<i>Rank</i>	<i>Subindex/Variable</i>	<i>Index</i>	<i>Rank</i>
Government and fiscal policy subindex	4.81	39	Government and fiscal policy subindex	4.81	39
Budget deficit, % of GSP	5.57	12	State and local taxes per capita /income per capita	4.45	37
Full-time-equivalent state and local government employees per 100 residents	5.72	10	Workers' compensation premium rates	4.73	34
			Bond rating: composite	4.04	43
			Average weekly payment to insured unemployed	4.36	38
Security subindex	4.50	38	Security subindex	4.50	38
			Crime index change 2012-2013, %	4.35	45
			Murder index, per 100,000 inhabitants	4.34	37
			The BGA Integrity Index	3.92	46
Infrastructure subindex	4.89	35	Infrastructure subindex	4.89	35
High-speed lines per 1000	5.83	6	Quality of Roads	4.24	40
			Average travel time to work	4.36	38
			Electricity Prices per kWh	4.90	38
Human resources subindex	5.14	23	Human resources subindex	5.14	23
% of population without health insurance	5.88	11	Unemployment rate, not seasonally adjusted	4.39	38
% of population aged 25 and over that graduated from high school	5.46	17	% of population enrolled in degree-granting institutions	4.58	32
Rate of active physicians per 100,000 inhabitants	5.59	12	% of adults who are in the labor force	4.71	31
% of students at or above proficient in mathematics, grade 4 - public schools	5.64	13			
Technology subindex	6.01	4	Technology subindex	6.01	4
Academic Science and Engineering R&D per \$1,000 GSP	6.17	6			
NIH support to institutions per capita	5.96	5			
Patents per 100,000 inhabitants	7.50	3			
Science & Engineering grad. students 100,000 inhabitants	5.78	9			
S&E degrees awarded per 100,000 inhabitants	5.86	9			
Business incubation subindex	4.75	38	Business incubation subindex	4.75	38
Total deposits (Commercial banks and Savings institutions) per capita	4.82	16	Employer firm births per 100,000 inhabitants	4.07	40
Venture capital per capita	4.87	14	% of labor force that is represented by unions	4.57	33
IPO volume, in \$ per capita	5.51	11	Pacific Research Institute Tort Index	3.44	46
Minimum wage	5.92	1	Cost of Labor Adjusted for Educ. Attainment	4.83	33
Openness subindex	5.02	24	Openness subindex	5.02	24
Incoming foreign direct investment per capita, dollars	5.53	18			
Environmental policy subindex	4.22	43	Environmental policy subindex	4.22	43
			Toxic release inventory, pounds per sq. miles	4.62	38
			Carbon emission per 1000 sq. miles	3.58	44
			Air Quality Index	4.46	38

RHODE ISLAND

Index Overall Rank

2018

4.34

37

BHI

State Index

COMPETITIVE ADVANTAGES			COMPETITIVE DISADVANTAGES		
<i>Subindex/Variable</i>	<i>Index</i>	<i>Rank</i>	<i>Subindex/Variable</i>	<i>Index</i>	<i>Rank</i>
Government and fiscal policy subindex			Government and fiscal policy subindex		
Budget deficit, % of GSP	4.89	32	State and local taxes per capita /income per capita	4.89	32
	6.47	3	Workers' compensation premium rates	4.07	42
				4.06	43
Security subindex			Security subindex		
Crime index, per 100,000 inhabitants	5.48	9	The BGA Integrity Index	5.48	9
Crime index change 2012-2013, %	5.93	9		4.03	44
Murder index, per 100,000 inhabitants	5.74	8			
	6.24	2			
Infrastructure subindex			Infrastructure subindex		
	4.20	47	Quality of Roads	4.20	47
			High-speed lines per 1000	1.97	50
			Electricity Prices per kWh	4.52	32
				3.90	43
Human resources subindex			Human resources subindex		
% of population without health insurance	5.34	15	% of population aged 25 and over that graduated from high school	5.34	15
% of population enrolled in degree-granting institutions	6.34	4	Unemployment rate, not seasonally adjusted	4.74	31
% of adults who are in the labor force	6.24	6	Infant mortality rate, deaths per 1000 live births	4.63	34
Rate of active physicians per 100,000 inhabitants	5.21	19		4.77	31
	5.90	8			
Technology subindex			Technology subindex		
Academic Science and Engineering R&D per \$1,000 GSP	5.28	12	Patents per 100,000 inhabitants	5.28	12
NIH support to institutions per capita	6.19	5	S&E degrees awarded per 100,000 inhabitants	4.36	39
Science & Engineering grad. students 100,000 inhabitants	6.57	3		3.80	48
Scientists and engineers as % of labor force	5.86	8			
	5.25	17			
Business incubation subindex			Business incubation subindex		
Employer firm births per 100,000 inhabitants	4.39	48	% of labor force that is represented by unions	4.39	48
	5.47	17	Minimum wage	3.57	46
			Pacific Research Institute Tort Index	3.84	39
			Cost of Labor Adjusted for Educ. Attainment	4.40	38
				3.98	42
Openness subindex			Openness subindex		
Incoming foreign direct investment per capita, dollars	5.36	18	Exports per capita, dollars	5.36	18
% of population born abroad	5.97	11		4.38	32
	5.71	13			
Environmental policy subindex			Environmental policy subindex		
Toxic release inventory, pounds per sq. miles	4.88	32	Carbon emission per 1000 sq. miles	4.88	32
	5.83	7	Air Quality Index	4.23	41
				4.59	32

SOUTH CAROLINA

Index **Overall Rank**
4.92 **29**



2018

COMPETITIVE ADVANTAGES			COMPETITIVE DISADVANTAGES		
<i>Subindex/Variable</i>	<i>Index</i>	<i>Rank</i>	<i>Subindex/Variable</i>	<i>Index</i>	<i>Rank</i>
Government and fiscal policy subindex	5.28	10	Government and fiscal policy subindex	5.28	10
State and local taxes per capita /income per capita	5.59	10	Workers' compensation premium rates	4.53	37
Budget deficit, % of GSP	5.87	7	Bond rating: composite	4.53	40
Average weekly payment to insured unemployed	6.14	7	Full-time-equivalent state and local government employees per 100 residents	5.01	34
Security subindex	4.33	45	Security subindex	4.33	45
			Crime index, per 100,000 inhabitants	4.22	42
			Crime index change 2012-2013, %	4.52	39
			Murder index, per 100,000 inhabitants	3.68	45
Infrastructure subindex	4.92	33	Infrastructure subindex	4.92	33
			High-speed lines per 1000	4.27	44
			Air passengers per capita	4.43	37
Human resources subindex	4.65	35	Human resources subindex	4.65	35
Unemployment rate, not seasonally adjusted	5.62	15	% of population without health insurance	4.24	39
Rate of active physicians per 100,000 inhabitants	6.80	4	% of population aged 25 and over that graduated from high school	4.47	34
			% of population enrolled in degree-granting institutions	4.01	44
			% of adults who are in the labor force	3.74	44
			Infant mortality rate, deaths per 1000 live births	4.52	35
			% of students at or above proficient in mathematics, grade 4 - public schools	3.84	43
Technology subindex	4.59	37	Technology subindex	4.59	37
Patents per 100,000 inhabitants	5.28	12	Academic Science and Engineering R&D per \$1,000 GSP	4.51	35
S&E degrees awarded per 100,000 inhabitants	5.21	17	NIH support to institutions per capita	4.48	36
			Science & Engineering grad. students 100,000 inhabitants	3.77	48
			Scientists and engineers as % of labor force	4.35	35
			Employment in high-tech industry as % of total employment	4.31	34
Business incubation subindex	5.27	10	Business incubation subindex	5.27	10
% of labor force that is represented by unions	6.49	1	Total deposits (Commercial banks and Savings institutions) per capita	4.67	47
Minimum wage	5.92	1	Venture capital per capita	4.60	40
Pacific Research Institute Tort Index	5.48	14			
Cost of Labor Adjusted for Educ. Attainment	6.01	7			
Openness subindex	5.55	11	Openness subindex	5.55	11
Exports per capita, dollars	5.80	12	% of population born abroad	4.29	36
Incoming foreign direct investment per capita, dollars	6.57	3			
Environmental policy subindex	5.05	24	Environmental policy subindex	5.05	24
Toxic release inventory, pounds per sq. miles	5.53	19			

State Index

SOUTH DAKOTA

Index **Overall Rank**

6.30

4

2018

BHI

COMPETITIVE ADVANTAGES			COMPETITIVE DISADVANTAGES		
<i>Subindex/Variable</i>	<i>Index</i>	<i>Rank</i>	<i>Subindex/Variable</i>	<i>Index</i>	<i>Rank</i>
Government and fiscal policy subindex			Government and fiscal policy subindex		
	5.01	25		5.01	25
State and local taxes per capita /income per capita	6.45	3	Bond rating: composite	4.04	43
			Budget deficit, % of GSP	4.36	37
Security subindex			Security subindex		
	5.81	4		5.81	4
Crime index change 2012-2013, %	7.26	1	Crime index, per 100,000 inhabitants	4.75	33
Murder index, per 100,000 inhabitants	6.28	1			
Infrastructure subindex			Infrastructure subindex		
	5.52	3		5.52	3
Quality of Roads	5.54	19	Air passengers per capita	4.43	36
Average travel time to work	6.92	1			
Average rent of 2 bedroom apartment	6.12	3			
Human resources subindex			Human resources subindex		
	5.12	24		5.12	24
% of population aged 25 and over that graduated from high school	5.96	9	% of population without health insurance	4.47	36
Unemployment rate, not seasonally adjusted	5.98	9	Infant mortality rate, deaths per 1000 live births	3.50	47
% of adults who are in the labor force	6.39	6	Rate of active physicians per 100,000 inhabitants	4.24	39
% of students at or above proficient in mathematics, grade 4 - public schools	5.49	14			
Technology subindex			Technology subindex		
	4.24	47		4.24	47
Science & Engineering grad. students 100,000 inhabitants	5.07	19	Academic Science and Engineering R&D per \$1,000 GSP	3.91	46
			NIH support to institutions per capita	4.31	42
			Patents per 100,000 inhabitants	4.31	49
			S&E degrees awarded per 100,000 inhabitants	3.89	47
			Scientists and engineers as % of labor force	4.22	41
			Employment in high-tech industry as % of total employment	3.96	42
Business incubation subindex			Business incubation subindex		
	5.88	1		5.88	1
Total deposits (Commercial banks and Savings institutions) per capita	10.00	1	Venture capital per capita	4.61	37
% of labor force that is represented by unions	5.80	14	Minimum wage	4.90	32
Pacific Research Institute Tort Index	6.60	4			
Cost of Labor Adjusted for Educ. Attainment	5.76	14			
Openness subindex			Openness subindex		
	3.81	49		3.81	49
			Exports per capita, dollars	3.54	50
			Incoming foreign direct investment per capita, dollars	3.82	45
			% of population born abroad	4.06	45
Environmental policy subindex			Environmental policy subindex		
	5.62	9		5.62	9
Toxic release inventory, pounds per sq. miles	5.88	3			
Carbon emission per 1000 sq. miles	6.08	4			

State Index

2018

COMPETITIVE ADVANTAGES			COMPETITIVE DISADVANTAGES		
Subindex/Variable	Index	Rank	Subindex/Variable	Index	Rank
Government and fiscal policy subindex	5.45	7	Government and fiscal policy subindex	5.45	7
State and local taxes per capita /income per capita	6.29	5	Budget deficit, % of GSP	4.36	37
Workers' compensation premium rates	5.38	19			
Average weekly payment to insured unemployed	6.36	5			
Full-time-equivalent state and local government employees per 100 residents	5.52	16			
Security subindex	4.16	47	Security subindex	4.16	47
			Crime index, per 100,000 inhabitants	3.37	48
			Murder index, per 100,000 inhabitants	3.81	44
			The BGA Integrity Index	4.46	35
Infrastructure subindex	5.37	12	Infrastructure subindex	5.37	12
Quality of Roads	6.33	3			
High-speed lines per 1000	5.00	15			
Electricity Prices per kWh	5.74	8			
Human resources subindex	4.39	41	Human resources subindex	4.39	41
Unemployment rate, not seasonally adjusted	5.49	17	% of population without health insurance	4.37	38
			% of population aged 25 and over that graduated from high school	4.24	37
			% of population enrolled in degree-granting institutions	3.92	46
			% of adults who are in the labor force	4.44	37
			Infant mortality rate, deaths per 1000 live births	3.75	45
			Rate of active physicians per 100,000 inhabitants	4.44	34
			% of students at or above proficient in mathematics, grade 4 - public schools	4.44	33
Technology subindex	4.47	40	Technology subindex	4.47	40
NIH support to institutions per capita	5.09	15	Patents per 100,000 inhabitants	4.33	44
			Science & Engineering grad. students 100,000 inhabitants	3.90	45
			Scientists and engineers as % of labor force	4.03	43
			Employment in high-tech industry as % of total employment	4.06	39
Business incubation subindex	5.12	16	Business incubation subindex	5.12	16
% of labor force that is represented by unions	5.94	10	Total deposits (Commercial banks and Savings institutions) per capita	4.72	32
Minimum wage	5.92	1	Venture capital per capita	4.64	33
Cost of Labor Adjusted for Educ. Attainment	5.85	12	Employer firm births per 100,000 inhabitants	4.30	39
Openness subindex	4.67	32	Openness subindex	4.67	32
Incoming foreign direct investment per capita, dollars	5.83	14	Exports per capita, dollars	3.89	46
			% of population born abroad	4.31	34
Environmental policy subindex	4.73	36	Environmental policy subindex	4.73	36
Air Quality Index	5.46	12	Toxic release inventory, pounds per sq. miles	3.77	45
			Carbon emission per 1000 sq. miles	4.96	32

2018					
COMPETITIVE ADVANTAGES			COMPETITIVE DISADVANTAGES		
Subindex/Variable	Index	Rank	Subindex/Variable	Index	Rank
Government and fiscal policy subindex	5.47	6	Government and fiscal policy subindex	5.47	6
State and local taxes per capita /income per capita	6.14	6	Average weekly payment to insured unemployed	4.12	42
Workers' compensation premium rates	5.99	9			
Budget deficit, % of GSP	5.87	7			
Full-time-equivalent state and local government employees per 100 residents	5.94	8			
Security subindex	4.87	28	Security subindex	4.87	28
			Crime index, per 100,000 inhabitants	4.71	34
Infrastructure subindex	5.62	1	Infrastructure subindex	5.62	1
Quality of Roads	5.81	10	Average travel time to work	4.49	37
High-speed lines per 1000	7.75	2	Average rent of 2 bedroom apartment	4.85	33
Air passengers per capita	5.24	13			
Electricity Prices per kWh	5.61	12			
Human resources subindex	4.28	42	Human resources subindex	4.28	42
			% of population without health insurance	1.89	50
			% of population aged 25 and over that graduated from high school	2.79	49
			% of population enrolled in degree-granting institutions	4.58	33
Technology subindex	5.24	13	Technology subindex	5.24	13
Patents per 100,000 inhabitants	7.03	5	Academic Science and Engineering R&D per \$1,000 GSP	4.62	32
Scientists and engineers as % of labor force	5.22	18	NIH support to institutions per capita	4.54	33
Employment in high-tech industry as % of total employment	5.49	13			
Business incubation subindex	5.30	9	Business incubation subindex	5.30	9
Total deposits (Commercial banks and Savings institutions) per capita	4.79	19			
Venture capital per capita	4.82	16			
IPO volume, in \$ per capita	5.55	10			
% of labor force that is represented by unions	6.13	4			
Minimum wage	5.92	1			
Pacific Research Institute Tort Index	5.41	18			
Openness subindex	6.25	3	Openness subindex	6.25	3
Exports per capita, dollars	7.18	2			
% of population born abroad	6.26	7			
Environmental policy subindex	4.96	30	Environmental policy subindex	4.96	30
Air Quality Index	5.00	19	Carbon emission per 1000 sq. miles	4.73	36

2018

COMPETITIVE ADVANTAGES			COMPETITIVE DISADVANTAGES		
<i>Subindex/Variable</i>	<i>Index</i>	<i>Rank</i>	<i>Subindex/Variable</i>	<i>Index</i>	<i>Rank</i>
Government and fiscal policy subindex	4.98	26	Government and fiscal policy subindex	4.98	26
Workers' compensation premium rates	6.29	5	Budget deficit, % of GSP	4.36	37
Full-time-equivalent state and local government employees per 100 residents	5.51	17	Average weekly payment to insured unemployed	4.09	43
Security subindex	5.43	14	Security subindex	5.43	14
Crime index, per 100,000 inhabitants	5.84	12	The BGA Integrity Index	4.21	43
Crime index change 2012-2013, %	5.58	12			
Murder index, per 100,000 inhabitants	6.08	7			
Infrastructure subindex	5.22	19	Infrastructure subindex	5.22	19
Air passengers per capita	5.62	8	High-speed lines per 1000	4.50	35
Average travel time to work	5.70	10	Average rent of 2 bedroom apartment	4.86	32
Electricity Prices per kWh	5.78	6			
Human resources subindex	5.67	7	Human resources subindex	5.67	7
% of population aged 25 and over that graduated from high school	6.00	8	% of population without health insurance	4.60	33
Unemployment rate, not seasonally adjusted	5.62	15	Rate of active physicians per 100,000 inhabitants	4.16	42
% of population enrolled in degree-granting institutions	7.88	1			
% of adults who are in the labor force	6.26	8			
% of students at or above proficient in mathematics, grade 4 - public schools	5.79	12			
Technology subindex	5.29	11	Technology subindex	5.29	11
NIH support to institutions per capita	4.96	19	S&E degrees awarded per 100,000 inhabitants	4.11	42
Patents per 100,000 inhabitants	6.48	6			
Science & Engineering grad. students 100,000 inhabitants	5.02	20			
Scientists and engineers as % of labor force	5.53	12			
Employment in high-tech industry as % of total employment	6.30	7			
Business incubation subindex	5.75	2	Business incubation subindex	5.75	2
Total deposits (Commercial banks and Savings institutions) per capita	5.94	3	Cost of Labor Adjusted for Educ. Attainment	4.86	32
Venture capital per capita	5.57	5			
Employer firm births per 100,000 inhabitants	6.00	10			
IPO volume, in \$ per capita	6.09	7			
% of labor force that is represented by unions	6.07	8			
Minimum wage	5.92	1			
Pacific Research Institute Tort Index	5.54	13			
Openness subindex	4.53	37	Openness subindex	4.53	37
			Incoming foreign direct investment per capita, dollars	3.79	46
Environmental policy subindex	3.92	47	Environmental policy subindex	3.92	47
Carbon emission per 1000 sq. miles	5.74	13	Toxic release inventory, pounds per sq. miles	2.26	49
			Air Quality Index	3.77	47

2018					
COMPETITIVE ADVANTAGES			COMPETITIVE DISADVANTAGES		
Subindex/Variable	Index	Rank	Subindex/Variable	Index	Rank
Government and fiscal policy subindex	4.53	43	Government and fiscal policy subindex	4.53	43
			State and local taxes per capita /income per capita	4.39	40
			Workers' compensation premium rates	4.26	42
			Bond rating: composite	4.53	40
			Average weekly payment to insured unemployed	4.61	33
			Full-time-equivalent state and local government employees per 100 residents	4.40	40
Security subindex	6.31	2	Security subindex	6.31	2
Crime index, per 100,000 inhabitants	6.23	2			
Crime index change 2012-2013, %	6.56	3			
Murder index, per 100,000 inhabitants	6.20	4			
The BGA Integrity Index	6.25	5			
Infrastructure subindex	4.70	40	Infrastructure subindex	4.70	40
Average travel time to work	5.39	15	High-speed lines per 1000	4.22	49
			Air passengers per capita	4.45	34
			Electricity Prices per kWh	3.93	42
Human resources subindex	5.76	6	Human resources subindex	5.76	6
% of population without health insurance	6.37	3	Rate of active physicians per 100,000 inhabitants	4.00	45
% of population aged 25 and over that graduated from high school	6.42	2			
Unemployment rate, not seasonally adjusted	6.35	3			
% of population enrolled in degree-granting institutions	5.71	12			
% of adults who are in the labor force	5.96	11			
Infant mortality rate, deaths per 1000 live births	5.96	12			
% of students at or above proficient in mathematics, grade 4 - public schools	5.34	15			
Technology subindex	4.73	32	Technology subindex	4.73	32
NIH support to institutions per capita	5.24	12	Patents per 100,000 inhabitants	4.33	43
Employment in high-tech industry as % of total employment	5.18	19	Science & Engineering grad. students 100,000 inhabitants	3.86	47
Business incubation subindex	4.68	40	Business incubation subindex	4.68	40
Employer firm births per 100,000 inhabitants	5.50	16	Total deposits (Commercial banks and Savings institutions) per capita	4.71	37
			Minimum wage	3.55	45
			Pacific Research Institute Tort Index	4.47	37
Openness subindex	4.67	34	Openness subindex	4.67	34
			% of population born abroad	4.24	38
Environmental policy subindex	5.59	11	Environmental policy subindex	5.59	11
Toxic release inventory, pounds per sq. miles	6.00	2	Air Quality Index	4.60	31
Carbon emission per 1000 sq. miles	6.16	1			

2018					
COMPETITIVE ADVANTAGES			COMPETITIVE DISADVANTAGES		
Subindex/Variable	Index	Rank	Subindex/Variable	Index	Rank
Government and fiscal policy subindex	5.14	19	Government and fiscal policy subindex	5.14	19
Workers' compensation premium rates	5.86	10	Budget deficit, % of GSP	4.36	37
Average weekly payment to insured unemployed	5.43	17			
Full-time-equivalent state and local government employees per 100 residents	5.41	20			
Security subindex	5.36	17	Security subindex	5.36	17
Crime index, per 100,000 inhabitants	6.05	4			
Crime index change 2012-2013, %	5.43	15			
The BGA Integrity Index	5.00	20			
Infrastructure subindex	4.92	32	Infrastructure subindex	4.92	32
Quality of Roads	5.72	12	Average travel time to work	3.97	43
High-speed lines per 1000	5.21	12	Average rent of 2 bedroom apartment	3.94	41
Air passengers per capita	5.35	12			
Human resources subindex	5.63	8	Human resources subindex	5.63	8
Unemployment rate, not seasonally adjusted	6.11	6	% of population without health insurance	4.80	31
% of population enrolled in degree-granting institutions	5.27	15			
% of adults who are in the labor force	5.54	15			
Rate of active physicians per 100,000 inhabitants	6.74	5			
% of students at or above proficient in mathematics, grade 4 - public schools	6.54	4			
Technology subindex	5.00	23	Technology subindex	5.00	23
Scientists and engineers as % of labor force	7.33	2	Academic Science and Engineering R&D per \$1,000 GSP	4.43	36
Employment in high-tech industry as % of total employment	7.27	2	S&E degrees awarded per 100,000 inhabitants	4.22	38
Business incubation subindex	5.11	17	Business incubation subindex	5.11	17
Total deposits (Commercial banks and Savings institutions) per capita	4.87	11	Cost of Labor Adjusted for Educ. Attainment	3.86	44
Venture capital per capita	4.78	19			
% of labor force that is represented by unions	6.11	5			
Minimum wage	5.92	1			
Pacific Research Institute Tort Index	5.97	8			
Openness subindex	5.02	25	Openness subindex	5.02	25
% of population born abroad	5.50	15	Exports per capita, dollars	4.37	33
Environmental policy subindex	5.17	20	Environmental policy subindex	5.17	20
Air Quality Index	5.53	11	Toxic release inventory, pounds per sq. miles	4.97	32

WASHINGTON

Index **Overall Rank**

5.32

19

2018



COMPETITIVE ADVANTAGES			COMPETITIVE DISADVANTAGES		
<i>Subindex/Variable</i>	<i>Index</i>	<i>Rank</i>	<i>Subindex/Variable</i>	<i>Index</i>	<i>Rank</i>
Government and fiscal policy subindex			Government and fiscal policy subindex		
Bond rating: composite	5.52	11	Workers' compensation premium rates	4.69	35
Budget deficit, % of GSP	5.57	12	Average weekly payment to insured unemployed	3.60	46
			Full-time-equivalent state and local government employees per 100 residents	5.01	33
Security subindex			Security subindex		
Murder index, per 100,000 inhabitants	4.93	26	Crime index change 2012-2013, %	4.93	26
	5.58	19	The BGA Integrity Index	4.48	41
				4.31	41
Infrastructure subindex			Infrastructure subindex		
High-speed lines per 1000	4.79	39	Quality of Roads	4.79	39
Air passengers per capita	5.14	13	Average travel time to work	4.24	40
Electricity Prices per kWh	5.47	9	Average rent of 2 bedroom apartment	4.18	42
	5.97	2		3.76	44
Human resources subindex			Human resources subindex		
% of population without health insurance	5.16	22	Unemployment rate, not seasonally adjusted	5.16	22
% of population aged 25 and over that graduated from high school	5.58	16	% of population enrolled in degree-granting institutions	4.02	43
Infant mortality rate, deaths per 1000 live births	5.69	15		4.04	43
% of students at or above proficient in mathematics, grade 4 - public schools	6.73	2			
	5.34	15			
Technology subindex			Technology subindex		
NIH support to institutions per capita	5.56	7	Academic Science and Engineering R&D per \$1,000 GSP	5.56	7
Patents per 100,000 inhabitants	5.91	6	Science & Engineering grad. students 100,000 inhabitants	4.63	31
Scientists and engineers as % of labor force	7.43	4	S&E degrees awarded per 100,000 inhabitants	4.41	38
Employment in high-tech industry as % of total employment	7.26	3		4.36	36
	6.61	5			
Business incubation subindex			Business incubation subindex		
Venture capital per capita	4.38	49	Total deposits (Commercial banks and Savings institutions) per capita	4.38	49
Employer firm births per 100,000 inhabitants	5.64	4	% of labor force that is represented by unions	4.71	39
			Minimum wage	3.18	48
			Pacific Research Institute Tort Index	2.82	50
			Cost of Labor Adjusted for Educ. Attainment	4.78	31
				3.76	46
Openness subindex			Openness subindex		
Exports per capita, dollars	5.37	17	Incoming foreign direct investment per capita, dollars	5.37	17
% of population born abroad	6.14	8		4.20	38
	5.78	11			
Environmental policy subindex			Environmental policy subindex		
Carbon emission per 1000 sq. miles	6.20	3		6.20	3
Air Quality Index	5.84	11			
	7.28	2			

2018

COMPETITIVE ADVANTAGES			COMPETITIVE DISADVANTAGES		
<i>Subindex/Variable</i>	<i>Index</i>	<i>Rank</i>	<i>Subindex/Variable</i>	<i>Index</i>	<i>Rank</i>
Government and fiscal policy subindex	5.18	17	Government and fiscal policy subindex	5.18	17
Workers' compensation premium rates	6.39	4	State and local taxes per capita /income per capita	4.71	33
Budget deficit, % of GSP	5.27	19	Full-time-equivalent state and local government employees per 100 residents	4.38	41
Average weekly payment to insured unemployed	5.57	15			
Security subindex	5.56	6	Security subindex	5.56	6
Crime index, per 100,000 inhabitants	5.48	20			
Crime index change 2012-2013, %	6.08	4			
State BGA Integrity Index	5.34	13			
Infrastructure subindex	4.83	37	Infrastructure subindex	4.83	37
Electricity Prices per kWh	5.56	16	Quality of Roads	4.06	44
Average rent of 2 bedroom apartment	6.27	1	High-speed lines per 1000	4.33	41
			Air passengers per capita	4.10	49
			Average travel time to work	4.64	34
Human resources subindex	4.44	39	Human resources subindex	4.44	39
% of population without health insurance	5.58	16	% of population aged 25 and over that graduated from high school	4.24	37
% of population enrolled in degree-granting institutions	6.38	5	Unemployment rate, not seasonally adjusted	3.29	49
Rate of active physicians per 100,000 inhabitants	5.14	20	% of adults who are in the labor force	2.49	50
			Infant mortality rate, deaths per 1000 live births	4.09	39
			% of students at or above proficient in mathematics, grade 4 - public schools	4.29	36
Technology subindex	4.27	45	Technology subindex	4.27	45
			Academic Science and Engineering R&D per \$1,000 GSP	4.32	40
			NIH support to institutions per capita	4.20	46
			Patents per 100,000 inhabitants	4.31	48
			Science & Engineering grad. students 100,000 inhabitants	4.13	42
			Scientists and engineers as % of labor force	3.94	44
			Employment in high-tech industry as % of total employment	3.86	46
Business incubation subindex	4.81	35	Business incubation subindex	4.81	35
Rate of Labor Adjusted for Educ. Attainment	6.49	2	Total deposits (Commercial banks and Savings institutions) per capita	4.68	43
			Venture capital per capita	4.56	48
			Employer firm births per 100,000 inhabitants	3.63	47
			Minimum wage	4.83	33
Openness subindex	4.13	44	Openness subindex	4.13	44
			Exports per capita, dollars	3.99	44
			% of population born abroad	3.75	50
Environmental policy subindex	4.13	44	Environmental policy subindex	4.13	44
Quality Index	5.44	14	Toxic release inventory, pounds per sq. miles	4.48	41
			Carbon emission per 1000 sq. miles	2.48	49

WISCONSIN

Index Overall Rank
5.32 18

2018

COMPETITIVE ADVANTAGES			COMPETITIVE DISADVANTAGES		
Subindex/Variable	Index	Rank	Subindex/Variable	Index	Rank
Government and fiscal policy subindex			Government and fiscal policy subindex		
Average weekly payment to insured unemployed	5.24	18	State and local taxes per capita /income per capita	3.92	47
Full-time-equivalent state and local government employees per 100 residents	6.02	5	Workers' compensation premium rates	4.39	40
Security subindex			Security subindex		
Murder index, per 100,000 inhabitants	5.62	18	The BGA Integrity Index	4.39	39
Infrastructure subindex			Infrastructure subindex		
Average travel time to work	5.62	13	Air passengers per capita	4.40	38
Average rent of 2 bedroom apartment	5.66	18	Electricity Prices per kWh	4.92	37
Human resources subindex			Human resources subindex		
% of population without health insurance	5.88	11	Infant mortality rate, deaths per 1000 live births	4.60	33
% of population aged 25 and over that graduated from high school	5.88	12			
Unemployment rate, not seasonally adjusted	5.86	11			
% of adults who are in the labor force	6.21	9			
% of students at or above proficient in mathematics, grade 4 - public schools	5.34	15			
Technology subindex			Technology subindex		
Academic Science and Engineering R&D per \$1,000 GSP	5.57	12	Science & Engineering grad. students 100,000 inhabitants	4.59	32
NIH support to institutions per capita	5.11	13	Employment in high-tech industry as % of total employment	4.47	32
Patents per 100,000 inhabitants	7.86	2			
Business incubation subindex			Business incubation subindex		
% of labor force that is represented by unions	5.51	20	Venture capital per capita	4.66	32
Minimum wage	5.92	1	Cost of Labor Adjusted for Educ. Attainment	4.83	34
Pacific Research Institute Tort Index	5.89	9			
Openness subindex			Openness subindex		
	4.35	42	Incoming foreign direct investment per capita, dollars	4.02	42
			% of population born abroad	4.31	34
Environmental policy subindex			Environmental policy subindex		
Toxic release inventory, pounds per sq. miles	5.52	20	Air Quality Index	4.32	41

WYOMING

Index **Overall Rank**
4.88 **30**

2018					
COMPETITIVE ADVANTAGES			COMPETITIVE DISADVANTAGES		
Subindex/Variable	Index	Rank	Subindex/Variable	Index	Rank
Government and fiscal policy subindex	4.28	49	Government and fiscal policy subindex	4.28	
State and local taxes per capita /income per capita	6.42	4	Workers' compensation premium rates	4.69	35
Bond rating: composite	6.26	1	Budget deficit, % of GSP	2.25	50
			Average weekly payment to insured unemployed	4.58	34
			Full-time-equivalent state and local government employees per 100 residents	1.47	49
Security subindex	6.48	1	Security subindex	6.48	1
Crime index, per 100,000 inhabitants	5.97	8	Crime index change 2012-2013, %	4.94	31
Murder index, per 100,000 inhabitants	5.91	12			
The BGA Integrity Index	9.07	1			
Infrastructure subindex	5.23	18	Infrastructure subindex	5.23	18
Average travel time to work	6.71	3	High-speed lines per 1000	4.21	50
Average rent of 2 bedroom apartment	5.59	20	Air passengers per capita	4.44	35
Human resources subindex	5.34	16	Human resources subindex	5.34	16
% of population aged 25 and over that graduated from high school	6.34	4	% of population without health insurance	4.24	39
% of adults who are in the labor force	5.26	18	Unemployment rate, not seasonally adjusted	4.51	36
Infant mortality rate, deaths per 1000 live births	6.13	9			
% of students at or above proficient in mathematics, grade 4 - public schools	6.69	3			
Technology subindex	3.99	50	Technology subindex	3.99	50
			Academic Science and Engineering R&D per \$1,000 GSP	4.62	32
			NIH support to institutions per capita	4.27	43
			S&E degrees awarded per 100,000 inhabitants	2.13	50
			Scientists and engineers as % of labor force	3.94	44
			Employment in high-tech industry as % of total employment	3.65	50
Business incubation subindex	5.26	11	Business incubation subindex	5.26	11
Employer firm births per 100,000 inhabitants	6.34	7	Venture capital per capita	4.61	38
% of labor force that is represented by unions	5.68	17			
Minimum wage	5.92	1			
Pacific Research Institute Tort Index	5.35	19			
Openness subindex	4.05	48	Openness subindex	4.05	48
			Exports per capita, dollars	4.34	34
			Incoming foreign direct investment per capita, dollars	3.74	47
			% of population born abroad	4.06	45
Environmental policy subindex	5.02	27	Environmental policy subindex	5.02	27
Toxic release inventory, pounds per sq. miles	5.83	6	Air Quality Index	3.66	48
Carbon emission per 1000 sq. miles	5.58	19			


About the Beacon Hill Institute

The Beacon Hill Institute (BHI) is an independent, nonpartisan economic research organization in Massachusetts. Articles and references to BHI's work have appeared in leading publications, including the Boston Globe, Washington Post, New York Times, Wall Street Journal, Los Angeles Times Magazine, The New York Sun, U.S. News & World Report and scholarly publications such as Cato Journal, State Tax Notes and the National Bureau of Economic Research's Working Papers Series.

Since 1991, BHI has been a leader in the development of state-of-the-art models for the analysis of state tax policy changes, interstate economic competitiveness and community economic impact studies. In addition, BHI has applied its customized economic models to public construction projects, public school performance and alternative energy. The Institute has also produced state revenue forecasts, using its own models for the Massachusetts Joint Legislative Committee for Ways and Means.



State Rankings 2018 by Rank

	Subindexes, Results in 2018 (8th Edition) by Rank																	
	Overall		Govt & Fiscal Policy		Security		InfrStrc		Human Resources		Tech		Biz Incub.		Openness		Enviro Plcy	
	Index	Rank	I	R	I	R	I	R	I	R	I	R	I	R	I	R	I	R
Massachusetts	7.75	1	4.75	31	5.52	19	3.17	46	7.28	1	8.53	1	6.68	3	6.26	6	4.58	37
Iowa	6.88	2	4.9	28	6.79	3	5.82	13	6.39	4	5	24	5.08	26	4.53	33	6.11	6
Texas	6.7	3	6.16	6	4.78	28	6.44	1	3.89	42	5.37	13	5.79	9	6.79	3	4.95	30
South Dakota	6.3	4	5.01	25	6.37	4	6.20	3	5.18	24	3.92	47	7.35	1	3.3	49	5.87	9
Idaho	6.28	5	4.66	35	5.78	10	6.07	5	5.25	21	4.42	38	6.46	5	3.68	46	6.83	2
Nebraska	6.14	6	5.18	24	5.83	8	6.04	7	5.87	9	4.46	34	4.76	32	4.12	39	6.55	4
Minnesota	6.03	7	4.67	34	5.74	12	5.38	20	6.88	3	4.83	27	3.86	42	5.33	20	5.84	10
Utah	5.98	8	4.94	26	5.72	14	5.50	19	6.01	7	5.43	11	6.99	2	4.34	37	3.48	47
Virginia	5.95	9	5.34	19	5.61	17	4.83	32	5.96	8	5.02	23	5.31	17	5.02	25	5.24	20
Colorado	5.92	10	5.83	8	4.92	25	4.95	29	5.85	10	5.86	6	5.04	27	4.38	36	5.44	16
North Carolina	5.91	11	4.42	41	4.61	32	5.98	9	4.32	37	6.5	3	6.4	6	5.22	22	4.81	33
North Dakota	5.85	12	5.21	22	4.22	37	6.21	2	6.27	5	5.11	21	5.55	14	4.56	31	4.97	29
Kansas	5.62	13	4.92	27	5.76	11	5.79	14	5.35	19	4.57	33	5.19	21	4.46	35	5.5	15
Georgia	5.56	14	5.19	23	4.61	33	5.95	11	3.81	44	5.11	19	6.14	8	5.23	21	5.35	18
Michigan	5.39	15	7.24	1	4.03	42	5.04	28	4.84	30	5.35	14	3.5	47	5.95	9	5.02	28
New Hampshire	5.38	16	5.52	13	4.67	29	3.34	45	7.17	2	5.33	15	5.13	23	4.9	27	4.88	31
Oregon	5.35	17	5.22	21	5.62	16	5.37	22	4.50	34	5.11	20	3.93	41	4.22	38	6.88	1
Wisconsin	5.32	18	4.72	33	5.2	24	5.28	23	5.64	13	5.56	8	5.21	20	4.07	42	5.11	23
Washington	5.32	19	4.77	29	4.88	26	4.52	39	5.23	22	5.82	7	3.35	49	5.53	17	6.69	3
California	5.32	20	3.83	44	4.3	35	4.24	41	4.61	31	5.45	10	6.61	4	6.38	5	5.37	17
Vermont	5.27	21	3.84	43	7.22	2	4.31	40	6.16	6	4.63	32	4.15	40	4.53	34	5.83	11
Florida	5.23	22	6.23	5	4.04	41	5.97	10	4.54	33	4.28	39	5.6	12	5.89	10	4.03	41
Montana	5.1	23	4.54	38	5.5	20	6.13	4	5.10	26	4.75	29	4.98	28	2.78	50	6.48	5
Arizona	5.06	24	7.05	2	4.14	39	5.06	27	4.39	36	4.69	30	4.64	34	4.89	28	5.29	19
New York	5.02	25	3.68	45	5.39	21	3.80	43	5.27	20	5.53	9	4.27	39	6.97	1	5.13	22
Maryland	4.96	26	4.76	30	4.02	43	3.69	44	5.71	12	8.42	2	3.57	44	5	26	4.74	34
Indiana	4.96	27	6.74	3	4.06	40	5.73	15	4.94	28	5.03	22	5.37	15	5.62	15	2.39	50
Maine	4.94	28	4.45	40	5.9	7	4.58	38	5.42	17	4.44	36	4.85	31	4.63	30	5.57	14
South Carolina	4.92	29	5.68	10	3.86	45	4.81	33	4.46	35	4.43	37	5.71	10	5.79	11	5.07	24
Wyoming	4.88	30	3.24	49	7.5	1	5.52	18	5.51	16	3.56	50	5.7	11	3.64	48	5.03	27
Kentucky	4.81	31	5.5	15	5.32	22	6.00	8	4.28	38	3.97	44	4.65	33	5.71	13	4.12	40
Nevada	4.52	32	6.54	4	3.7	46	6.07	6	3.61	47	3.61	49	4.91	30	6.23	7	4.14	39
Connecticut	4.51	33	3.6	47	6.05	5	2.94	48	5.76	11	6.28	5	3.26	50	6.2	8	4.71	35
Ohio	4.51	34	5.32	20	5.31	23	5.67	16	4.56	32	4.81	28	4.46	37	5.04	23	3.62	46
Missouri	4.49	35	5.51	14	3.43	49	5.22	25	5.15	25	5.19	18	5.1	25	4.07	41	5.07	25
Pennsylvania	4.34	36	4.54	39	4.15	38	4.74	35	5.20	23	6.46	4	4.35	38	5.03	24	3.9	43
Rhode Island	4.34	37	4.72	32	5.82	9	3.16	47	5.51	15	5.42	12	3.39	48	5.51	18	4.84	32
Tennessee	4.32	38	6.1	7	3.58	47	5.86	12	4.05	41	4.25	40	5.34	16	4.54	32	4.62	36
Arkansas	4.22	39	5.67	11	4.3	34	5.61	17	3.67	45	3.92	48	5.11	24	4.11	40	5.68	13
Alabama	4.18	40	5.74	9	3.94	44	5.38	21	3.65	46	4.97	25	4.98	29	4.76	29	4.57	38
Illinois	4.09	41	3.58	48	4.28	36	5.27	24	4.91	29	5.25	17	3.75	43	6.74	4	3.98	42
Delaware	4.03	42	3.99	42	4.65	30	4.21	42	5.00	27	4.66	31	6.26	7	5.71	12	3.13	48
Hawaii	3.93	43	3.67	46	5.59	18	2.40	50	5.64	14	4	43	4.46	36	5.56	16	6.05	7
Mississippi	3.82	44	5.35	18	5.73	13	4.84	31	2.78	50	4.45	35	5.22	19	3.67	47	5.06	26
Alaska	3.74	45	4.56	37	4.63	31	4.63	36	3.82	43	4.13	41	3.51	46	5.66	14	5.96	8
New Mexico	3.74	46	5.55	12	2.94	50	4.81	34	3.56	48	5.30	16	5.18	22	3.77	43	5.79	12
Oklahoma	3.68	47	4.56	36	4.84	27	4.94	30	4.08	40	4.04	42	5.29	18	3.76	45	5.24	21
West Virginia	3.43	48	5.45	17	5.95	6	4.60	37	4.13	39	3.96	45	4.51	35	3.76	44	3.78	44
Louisiana	3.14	49	5.48	16	3.47	48	5.11	26	3.43	49	3.93	46	5.56	13	5.34	19	3.09	49
New Jersey	2.85	50	1.87	50	5.71	15	2.81	49	5.40	18	4.89	26	3.54	45	6.82	2	3.65	45



**The Beacon Hill Institute for Public Policy Research
165 Main Street, Suite 306
Medway, MA 02053**

**Phone: 855-BHI-4550 (855-244-4550)
E-mail: bhi@beaconhill.org**